

## Product datasheet for **TA385208**

### SATB2 Rabbit Polyclonal Antibody

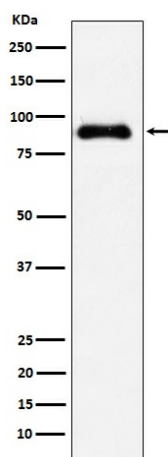
#### Product data:

Product Type:	Primary Antibodies
Applications:	IHC, WB
Recommended Dilution:	WB: 1/500-1/2000 IHC: 1/50-1/200
Reactivity:	Human
Host:	Rabbit
Isotype:	IgG
Clonality:	Polyclonal
Immunogen:	A synthesized peptide derived from human SATB2
Formulation:	Rabbit IgG in phosphate buffered saline , pH 7.4, 150mM NaCl, 0.02% sodium azide and 50% glycerol.
Concentration:	lot specific
Purification:	Affinity Chromatography
Conjugation:	Unconjugated
Storage:	Store at 4°C short term. Aliquot and store at -20°C long term. Avoid freeze/thaw cycles.
Stability:	1 year
Predicted Protein Size:	83kDa
Gene Name:	SATB homeobox 2
Database Link:	<a href="#">Entrez Gene 23314 Human Q9UPW6</a>
Background:	Swiss-Prot Acc.Q9UPW6.Binds to DNA, at nuclear matrix- or scaffold-associated regions. Thought to recognize the sugar-phosphate structure of double-stranded DNA. Transcription factor controlling nuclear gene expression, by binding to matrix attachment regions (MARs) of DNA and inducing a local chromatin-loop remodeling. Acts as a docking site for several chromatin remodeling enzymes and also by recruiting corepressors (HDACs) or coactivators (HATs) directly to promoters and enhancers.
Synonyms:	FLJ21474; FLJ32076; KIAA1034; MGC119474; MGC119477; OTTHUMP00000163655; OTTHUMP00000205774; OTTHUMP00000205775



[View online »](#)

## Product images:



Western blot analysis of SATB2 in HT-1080 lysates using SATB2 antibody.