

Product datasheet for **TA385206**

SALL4 Mouse Polyclonal Antibody

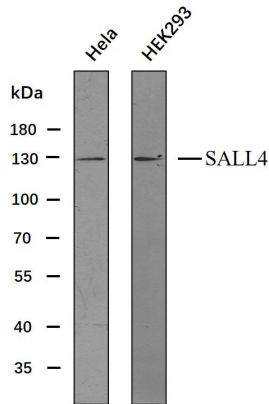
Product data:

Product Type:	Primary Antibodies
Applications:	IHC, WB
Recommended Dilution:	IHC-p: 1/100-1/500 WB: 1/500-1/2000
Reactivity:	Human
Host:	Mouse
Isotype:	IgG2b, kappa
Clonality:	Polyclonal
Immunogen:	Synthesized peptide derived from human SALL4
Formulation:	Liquid in PBS containing 50% glycerol, 0.5% BSA and 0.02% sodium azide, pH 7.3.
Concentration:	lot specific
Purification:	Affinity Chromatography
Conjugation:	Unconjugated
Storage:	Store at 4°C short term. Aliquot and store at -20°C long term. Avoid freeze/thaw cycles.
Stability:	1 year
Predicted Protein Size:	Observed MW (kDa): 112
Gene Name:	spalt like transcription factor 4
Database Link:	Entrez Gene 57167 Human Q9UJQ4
Background:	Swiss-Prot Acc.Q9UJQ4.
Synonyms:	dj1112F19.1; DRRS; HSAL4; MGC133050; ZNF797



[View online »](#)

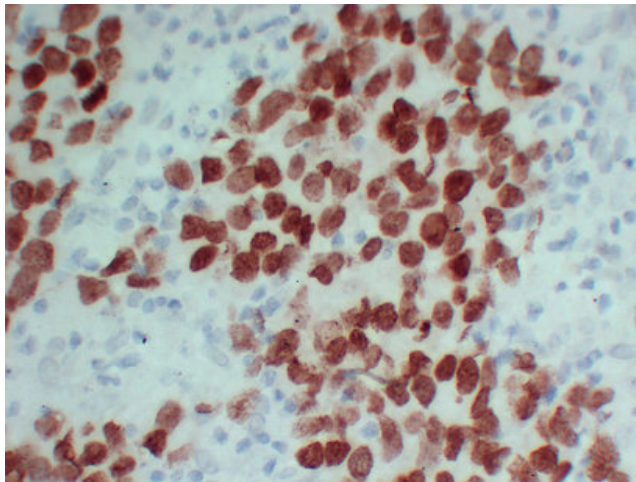
Product images:



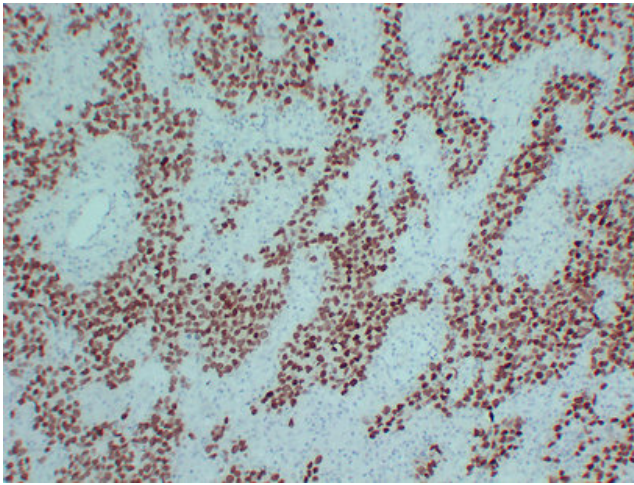
Various whole cell lysates(30ug) were separated by 8% SDS-PAGE, and the membrane was blotted with SALL4. The HRP-conjugated anti-Mouse IgG antibody was used to detect the antibody.

Predicted band size: 113kDa
Observed band size: 130kDa

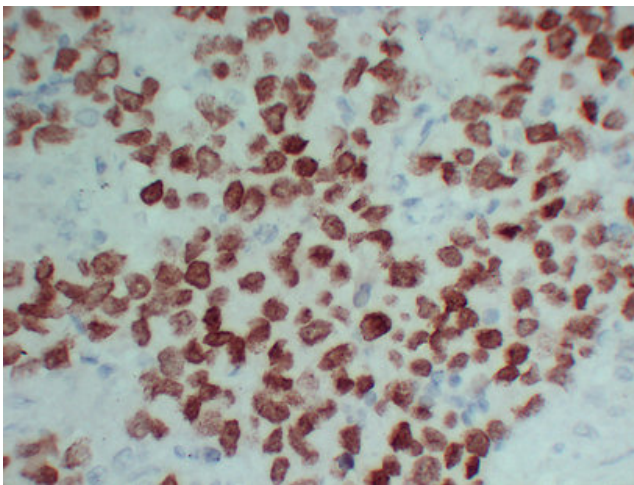
Western blot analysis of SALL4 Antibody at 1:1000 dilution.



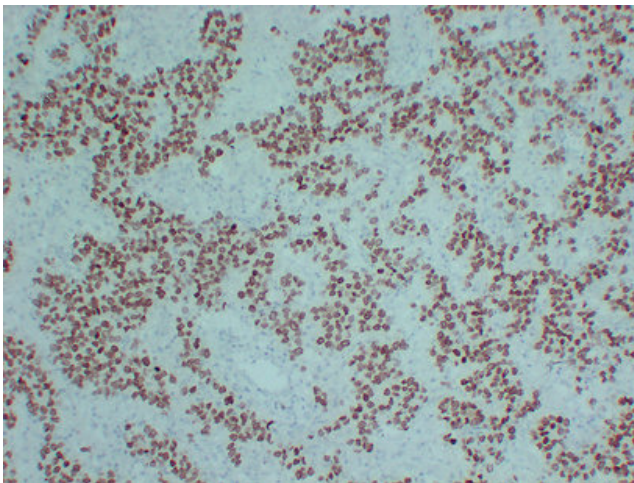
Immunohistochemical analysis of paraffin-embedded Seminoma-high magnification. 1, Antibody was diluted at 1:200(4°, overnight). 2, TRIS-EDTA of pH8.0 was used for antigen retrieval. 3, Secondary antibody was diluted at 1:200(room temperature, 30min).



Immunohistochemical analysis of paraffin-embedded Seminoma. 1, Antibody was diluted at 1:200(4°, overnight). 2, TRIS-EDTA of pH8.0 was used for antigen retrieval. 3, Secondary antibody was diluted at 1:200(room temperature, 30min).



Immunohistochemical analysis of paraffin-embedded Seminoma-high magnification. 1, Antibody was diluted at 1:200(4°, overnight). 2, TRIS-EDTA of pH8. was used for antigen retrieval. 3, Secondary antibody was diluted at 1:200(room temperature, 30min).



Immunohistochemical analysis of paraffin-embedded Seminoma. 1, Antibody was diluted at 1:200(4°, overnight). 2, TRIS-EDTA of pH8.0 was used for antigen retrieval. 3, Secondary antibody was diluted at 1:200(room temperature, 30min).