

## Product datasheet for **TA385203S**

### **S100 beta (S100B) Rabbit Polyclonal Antibody**

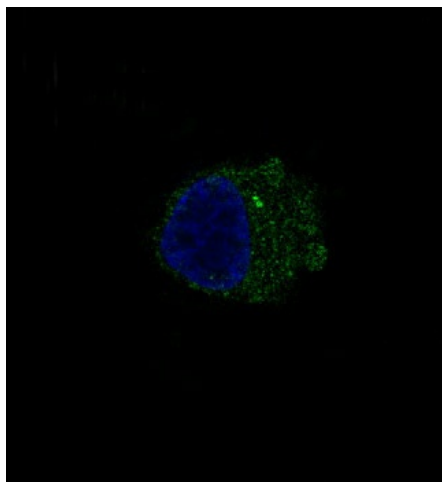
#### **Product data:**

<b>Product Type:</b>	Primary Antibodies
<b>Applications:</b>	IF, IHC, IP, WB
<b>Recommended Dilution:</b>	WB: 1/500-1/2000 IHC: 1/50-1/200 ICC/IF: 1/50-1/200 IP: 1/50
<b>Reactivity:</b>	Human, Mouse, Rat, Goat
<b>Host:</b>	Rabbit
<b>Isotype:</b>	IgG
<b>Clonality:</b>	Polyclonal
<b>Immunogen:</b>	A synthesized peptide derived from human S100B
<b>Formulation:</b>	Rabbit IgG in phosphate buffered saline , pH 7.4, 150mM NaCl, 0.02% sodium azide and 50% glycerol.
<b>Concentration:</b>	lot specific
<b>Purification:</b>	Affinity Chromatography
<b>Conjugation:</b>	Unconjugated
<b>Storage:</b>	Store at 4°C short term. Aliquot and store at -20°C long term. Avoid freeze/thaw cycles.
<b>Stability:</b>	1 year
<b>Predicted Protein Size:</b>	11kDa
<b>Gene Name:</b>	S100 calcium binding protein B
<b>Database Link:</b>	<a href="#">Entrez Gene 6285 Human P04271</a>
<b>Background:</b>	Swiss-Prot Acc.P04271.Despite their relatively small size (8-12 kDa) and uncomplicated architecture, S100 proteins regulate a variety of cellular processes such as cell growth and motility, cell cycle progression, transcription, and differentiation. To date, 25 members have been identified, including S100A1-S100A18, trichohyalin, filaggrin, repetin, S100P, and S100Z, making it the largest group in the EF-hand, calcium-binding protein family.
<b>Synonyms:</b>	NEF; OTTHUMP00000174958; S100; S100beta

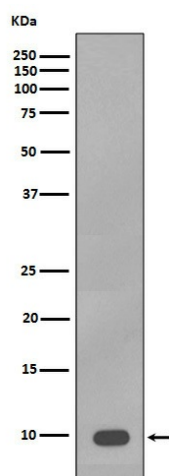


[View online »](#)

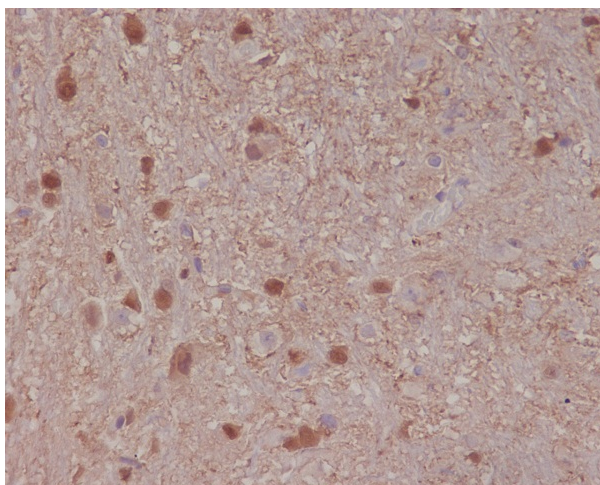
## Product images:



Immunofluorescent analysis of A375 cells, using S1B Antibody .



Western blot analysis of S100B expression in A375 cell lysate.



Immunohistochemical analysis of paraffin-embedded rat brain, using S100B Antibody.