

Product datasheet for **TA385203M**

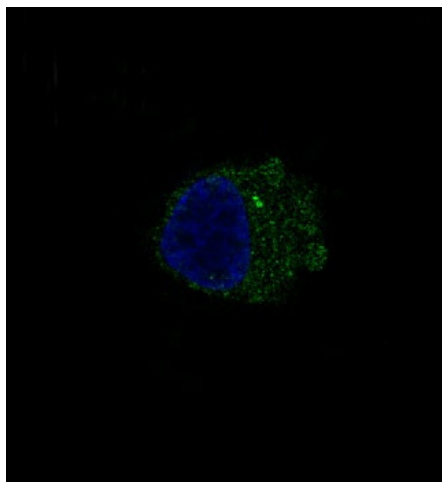
S100 beta (S100B) Rabbit Polyclonal Antibody

Product data:

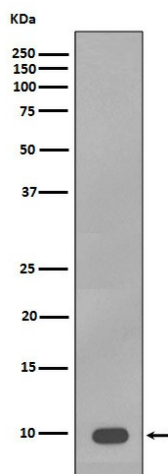
Product Type:	Primary Antibodies
Applications:	IF, IHC, IP, WB
Recommended Dilution:	WB: 1/500-1/2000 IHC: 1/50-1/200 ICC/IF: 1/50-1/200 IP: 1/50
Reactivity:	Human, Mouse, Rat, Goat
Host:	Rabbit
Isotype:	IgG
Clonality:	Polyclonal
Immunogen:	A synthesized peptide derived from human S100B
Formulation:	Rabbit IgG in phosphate buffered saline , pH 7.4, 150mM NaCl, 0.02% sodium azide and 50% glycerol.
Concentration:	lot specific
Purification:	Affinity Chromatography
Conjugation:	Unconjugated
Storage:	Store at 4°C short term. Aliquot and store at -20°C long term. Avoid freeze/thaw cycles.
Stability:	1 year
Predicted Protein Size:	11kDa
Gene Name:	S100 calcium binding protein B
Database Link:	Entrez Gene 6285 Human P04271
Background:	Swiss-Prot Acc.P04271.Despite their relatively small size (8-12 kDa) and uncomplicated architecture, S100 proteins regulate a variety of cellular processes such as cell growth and motility, cell cycle progression, transcription, and differentiation. To date, 25 members have been identified, including S100A1-S100A18, trichohyalin, filaggrin, repetin, S100P, and S100Z, making it the largest group in the EF-hand, calcium-binding protein family.
Synonyms:	NEF; OTTHUMP00000174958; S100; S100beta


[View online »](#)

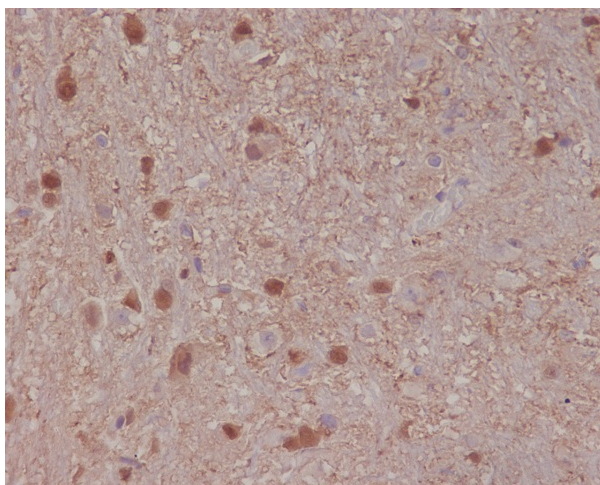
Product images:



Immunofluorescent analysis of A375 cells, using S1B Antibody .



Western blot analysis of S100B expression in A375 cell lysate.



Immunohistochemical analysis of paraffin-embedded rat brain, using S100B Antibody.