

Product datasheet for **TA385202**

S100 alpha 6 (S100A6) Mouse Polyclonal Antibody

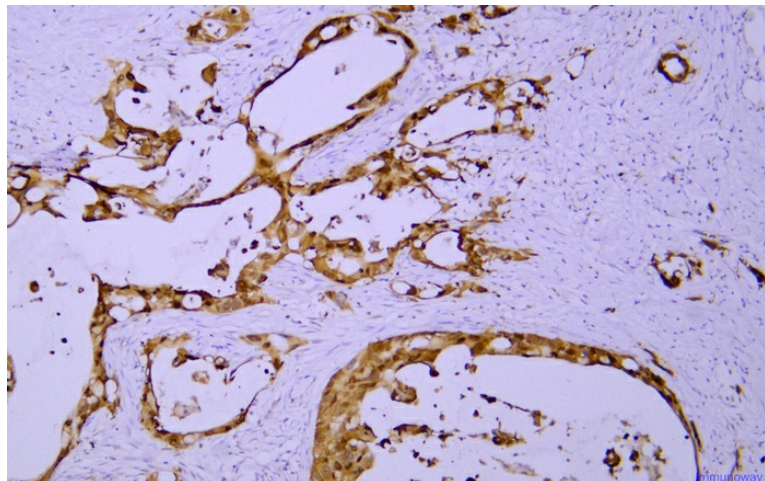
Product data:

Product Type:	Primary Antibodies
Applications:	IHC
Recommended Dilution:	IHC-p: 1/100-1/500
Reactivity:	Human
Host:	Mouse
Isotype:	IgG1, kappa
Clonality:	Polyclonal
Immunogen:	Synthesized peptide derived from human S100A6
Formulation:	Liquid in PBS containing 50% glycerol, 0.5% BSA and 0.02% sodium azide.
Concentration:	lot specific
Purification:	Affinity Chromatography
Conjugation:	Unconjugated
Storage:	Store at 4°C short term. Store at -20°C long term. Avoid freeze / thaw cycle.
Stability:	1 year
Gene Name:	S100 calcium binding protein A6
Database Link:	Entrez Gene 6277 Human P06703
Background:	Swiss-Prot Acc.P06703.
Synonyms:	2A9; 5B10; CABP; CACY; calcyclin; OTTHUMP00000015473; PRA



[View online »](#)

Product images:



Immunohistochemical analysis of paraffin-embedded human pancreatic cancer