

Product datasheet for **TA385201**

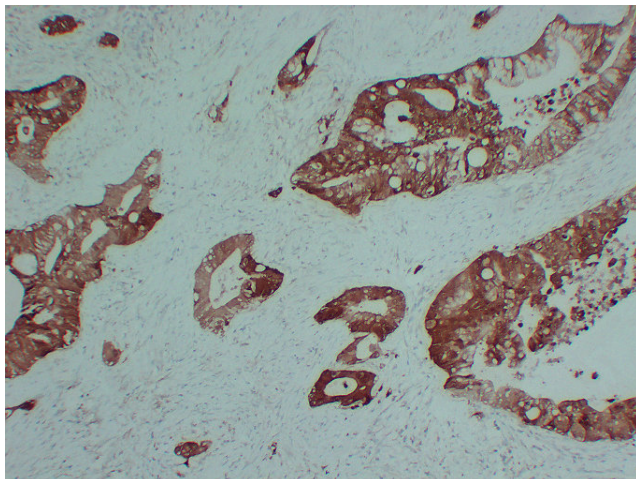
S100 alpha 6 (S100A6) Mouse Monoclonal Antibody [Clone ID: 4B1-8B10-8D8]

Product data:

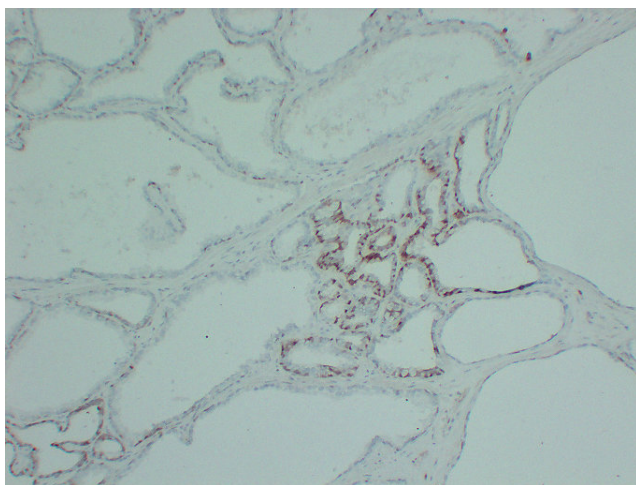
Product Type:	Primary Antibodies
Clone Name:	4B1-8B10-8D8
Applications:	IHC
Recommended Dilution:	IHC-p: 1/100-1/500
Reactivity:	Human
Host:	Mouse
Isotype:	IgG1, kappa
Clonality:	Monoclonal
Immunogen:	Synthesized peptide derived from human S100A6
Formulation:	Liquid in PBS containing 50% glycerol, 0.5% BSA and 0.02% sodium azide, pH 7.3.
Concentration:	lot specific
Purification:	Affinity Chromatography
Conjugation:	Unconjugated
Storage:	Store at 4°C short term. Aliquot and store at -20°C long term. Avoid freeze/thaw cycles.
Stability:	1 year
Gene Name:	S100 calcium binding protein A6
Database Link:	Entrez Gene 6277 Human P06703
Background:	Swiss-Prot Acc.P06703.
Synonyms:	2A9; 5B10; CABP; CACY; calcyclin; OTTHUMP00000015473; PRA



[View online »](#)

Product images:

Immunohistochemical analysis of paraffin-embedded human Pancreatic adenocarcinoma. 1,S100A6 Antibody was diluted at 1:200(4°,overnight). 2, EDTA pH 8.0 was used for antigen retrieval



Immunohistochemical analysis of paraffin-embedded human Prostate. 1,S100A6 Antibody was diluted at 1:200(4°,overnight). 2, EDTA pH 8.0 was used for antigen retrieval