

## Product datasheet for **TA385200**

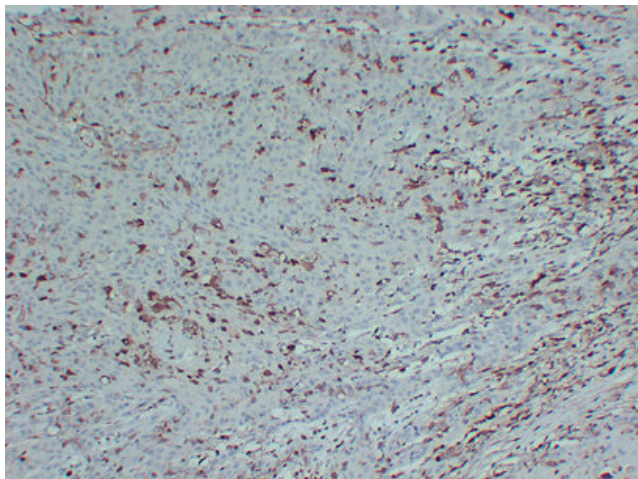
### **S100A4 Mouse Monoclonal Antibody [Clone ID: 10E1-1H10-6B5]**

#### **Product data:**

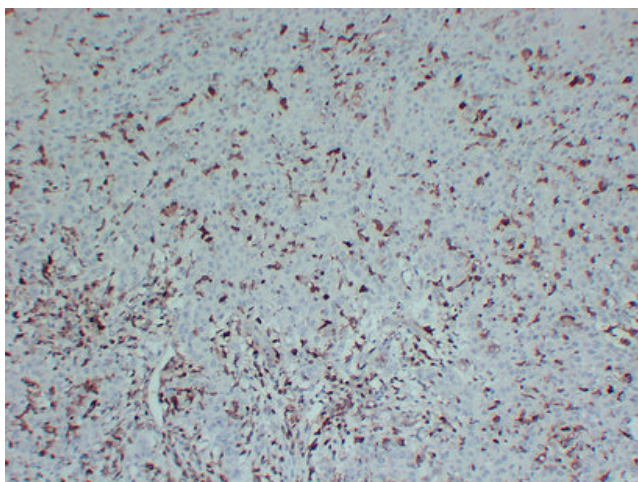
Product Type:	Primary Antibodies
Clone Name:	10E1-1H10-6B5
Applications:	IHC
Recommended Dilution:	IHC-p: 1/100-1/500
Reactivity:	Human
Host:	Mouse
Isotype:	IgG3, kappa
Clonality:	Monoclonal
Immunogen:	Synthesized peptide derived from human S100A4
Formulation:	Liquid in PBS containing 50% glycerol, 0.5% BSA and 0.02% sodium azide, pH 7.3.
Concentration:	lot specific
Purification:	Affinity Chromatography
Conjugation:	Unconjugated
Storage:	Store at 4°C short term. Aliquot and store at -20°C long term. Avoid freeze/thaw cycles.
Stability:	1 year
Gene Name:	S100 calcium binding protein A4
Database Link:	<a href="#">Entrez Gene 6275 Human P26447</a>
Background:	Swiss-Prot Acc.P26447.
Synonyms:	18A2; 42A; Calvasculin; CAPL; FSP1; Metastasin; MTS1; OTTHUMP00000015469; OTTHUMP00000032895; P9KA; PEL98



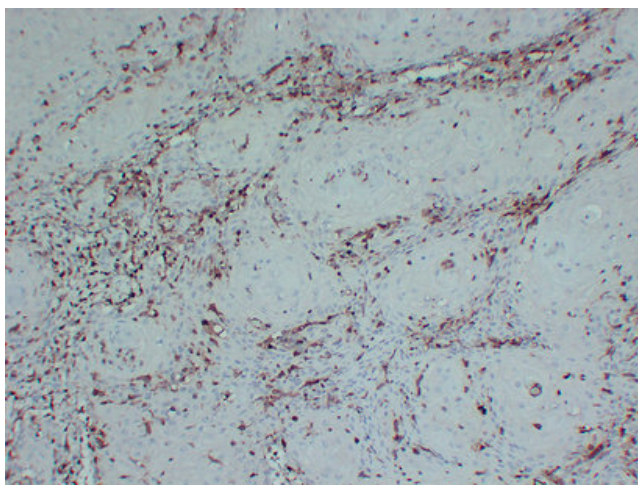
[View online »](#)

**Product images:**

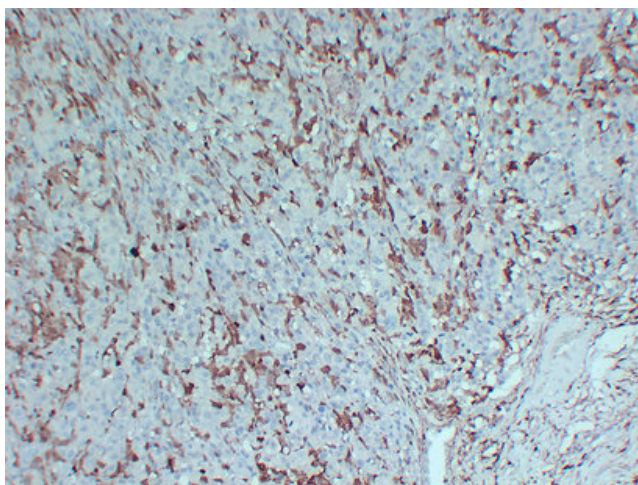
Immunohistochemical analysis of paraffin-embedded Cutaneous squamous cell carcinoma. 1, Antibody was diluted at 1:200(4°,overnight). 2, Citrate buffer of pH6.0 was used for antigen retrieval. 3,Secondary antibody was diluted at 1:200(room temperature, 30min).



Immunohistochemical analysis of paraffin-embedded Cutaneous squamous cell carcinoma. 1, Antibody was diluted at 1:200(4°,overnight). 2, Citrate buffer of pH6.0 was used for antigen retrieval. 3,Secondary antibody was diluted at 1:200(room temperature, 30min).



Immunohistochemical analysis of paraffin-embedded Cutaneous squamous cell carcinoma. 1, Antibody was diluted at 1:200(4°, overnight). 2, Citrate buffer of pH6. was used for antigen retrieval. 3, Secondary antibody was diluted at 1:200(room temperature, 30min).



Immunohistochemical analysis of paraffin-embedded Malignant melanoma. 1, Antibody was diluted at 1:200(4°, overnight). 2, Citrate buffer of pH6.0 was used for antigen retrieval. 3, Secondary antibody was diluted at 1:200(room temperature, 30min).