

## Product datasheet for TA385199S

### S100A4 Mouse Monoclonal Antibody [Clone ID: 3D10-B4-D10]

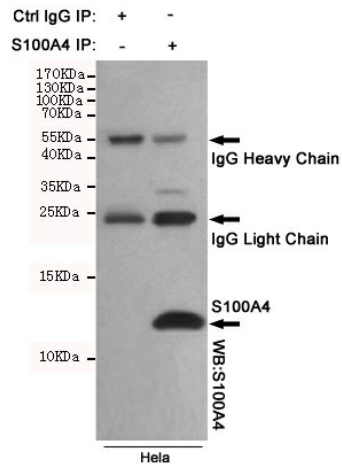
#### Product data:

Product Type:	Primary Antibodies
Clone Name:	3D10-B4-D10
Applications:	IP, WB
Recommended Dilution:	WB: 1/500 IP: 1/20
Reactivity:	Human
Host:	Mouse
Isotype:	IgG1
Clonality:	Monoclonal
Immunogen:	Recombinant human S100A4 protein.
Formulation:	Liquid in PBS containing 50% glycerol, 0.5% BSA and 0.03% Proclin 300, pH 7.3.
Concentration:	lot specific
Purification:	Affinity Purified
Conjugation:	Unconjugated
Storage:	Store at 4°C short term. Aliquot and store at -20°C long term. Avoid freeze/thaw cycles.
Stability:	1 year
Predicted Protein Size:	12kDa
Gene Name:	S100 calcium binding protein A4
Database Link:	<a href="#">Entrez Gene 6275 Human P26447</a>
Background:	Swiss-Prot Acc.P26447.The protein encoded by this gene is a member of the S100 family of proteins containing 2 EF-hand calcium-binding motifs. This protein may function in motility, invasion, and tubulin polymerization. Chromosomal rearrangements and altered expression of this gene have been implicated in tumor metastasis.
Synonyms:	18A2; 42A; Calvasculin; CAPL; FSP1; Metastasin; MTS1; OTTHUMP00000015469; OTTHUMP00000032895; P9KA; PEL98

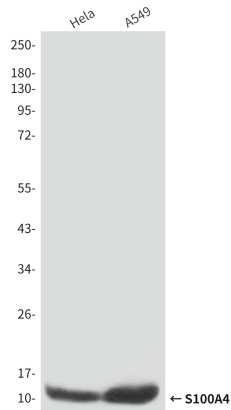


[View online »](#)

Product images:



Immunoprecipitation analysis of HeLa cell lysates using S100A4 mouse mAb.



Western blot analysis of S100A4 in HeLa and A549 lysates using S100A4 antibody.