

## Product datasheet for **TA385196S**

### **RUNX2 Rabbit Monoclonal Antibody [Clone ID: R07-9C7]**

#### **Product data:**

Product Type:	Primary Antibodies
Clone Name:	R07-9C7
Applications:	IF, IHC, IP, WB
Recommended Dilution:	WB: 1/2000 IHC: 1/50 ICC/IF: 1/50 IP: 1/20
Reactivity:	Human, Mouse, Rat
Host:	Rabbit
Isotype:	IgG
Clonality:	Monoclonal
Immunogen:	A synthetic peptide of human RUNX1/2/3
Formulation:	50mM Tris-Glycine(pH 7.4), 0.15M NaCl, 40% Glycerol, 0.01% Sodium azide and 0.05% BSA
Concentration:	lot specific
Purification:	Affinity Purified
Conjugation:	Unconjugated
Storage:	Store at 4°C short term. Aliquot and store at -20°C long term. Avoid freeze/thaw cycles.
Stability:	1 year
Predicted Protein Size:	Calculated MW: 49 kDa; Observed MW: 49 kDa
Gene Name:	runt related transcription factor 2
Database Link:	<a href="#">Entrez Gene 860 Human</a> <a href="#">Q01196</a>



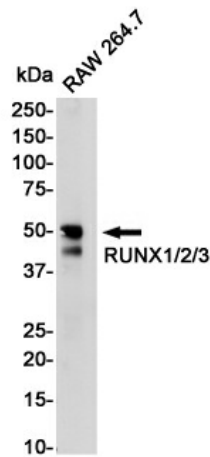
[View online »](#)

**Background:**

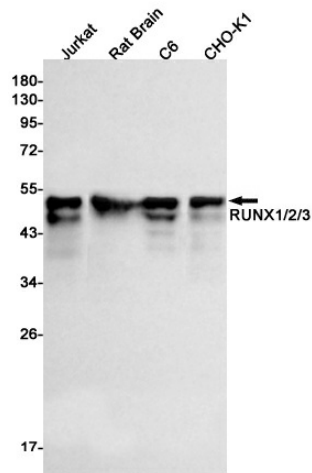
Swiss-Prot Acc.Q01196.CBF binds to the core site, 5'-PYGPGGT-3', of a number of enhancers and promoters, including murine leukemia virus, polyomavirus enhancer, T-cell receptor enhancers, LCK, IL-3 and GM-CSF promoters. The alpha subunit binds DNA and appears to have a role in the development of normal hematopoiesis. Isoform AML-1L interferes with the transactivation activity of RUNX1. Acts synergistically with ELF4 to transactivate the IL-3 promoter and with ELF2 to transactivate the mouse BLK promoter. Inhibits KAT6B-dependent transcriptional activation. Controls the energy and suppressive function of regulatory T-cells (Treg) by associating with FOXP3. Activates the expression of IL2 and IFNG and down-regulates the expression of TNFRSF18, IL2RA and CTLA4, in conventional T-cells (PubMed:17377532). Positively regulates the expression of RORC in T-helper 17 cells .

**Synonyms:**

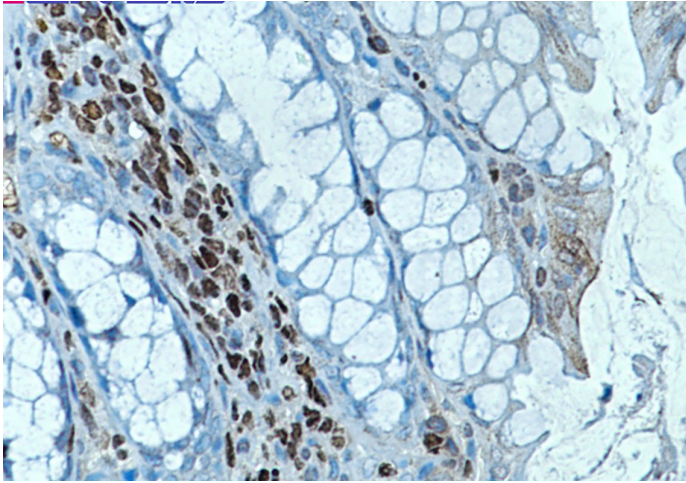
AML3; CBF-alpha-1; CBFA1; CCD; CCD1; MGC120022; MGC120023; OSF-2; OSF2; PEA2aA; PEBP2A; PEBP2A1; PEBP2A2; PEBP2aA; PEBP2aA1

**Product images:**


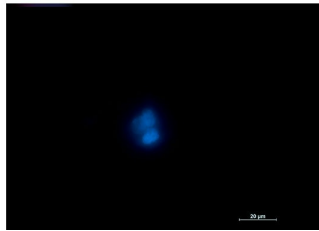
Western blot analysis of RUNX1/2/3 in RAW264.7 lysates using RUNX1/2/3 antibody



Western blot analysis of RUNX1/2/3 in Jurkat, rat Brain, C6, CHO-K1 lysates using RUNX1/2/3 antibody.



Immunohistochemistry analysis of paraffin-embedded mouse colon using RUNX2 antibody. High-pressure and temperature Sodium Citrate pH 6.0 was used for antigen retrieval.



Immunocytochemistry analysis of RUNX2 (green) in Jurkat using RUNX2 antibody, and DAPI (blue).