

Product datasheet for **TA385194**

RRM2 Rabbit Polyclonal Antibody

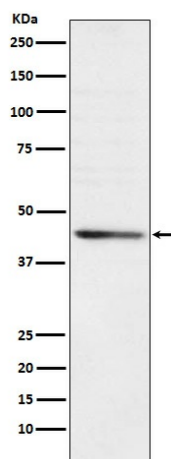
Product data:

| | |
|-------------------------|---|
| Product Type: | Primary Antibodies |
| Applications: | IF, IP, WB |
| Recommended Dilution: | WB: 1/500-1/2000 ICC/IF: 1/50-1/200 IP: 1/50 |
| Reactivity: | Human |
| Host: | Rabbit |
| Isotype: | IgG |
| Clonality: | Polyclonal |
| Immunogen: | A synthesized peptide derived from human RRM2 |
| Formulation: | Rabbit IgG in phosphate buffered saline , pH 7.4, 150mM NaCl, 0.02% sodium azide and 50% glycerol. |
| Concentration: | lot specific |
| Purification: | Affinity Chromatography |
| Conjugation: | Unconjugated |
| Storage: | Store at 4°C short term. Aliquot and store at -20°C long term. Avoid freeze/thaw cycles. |
| Stability: | 1 year |
| Predicted Protein Size: | 45kDa |
| Gene Name: | ribonucleotide reductase regulatory subunit M2 |
| Database Link: | Entrez Gene 6241 Human P31350 |
| Background: | Swiss-Prot Acc.P31350.Provides the precursors necessary for DNA synthesis. Catalyzes the biosynthesis of deoxyribonucleotides from the corresponding ribonucleotides. Inhibits Wnt signaling. |
| Synonyms: | R2; RR2; RR2M |



[View online »](#)

Product images:



Western blot analysis of RRM2 in HeLa lysates using RRM2 antibody.