

Product datasheet for **TA385192M**

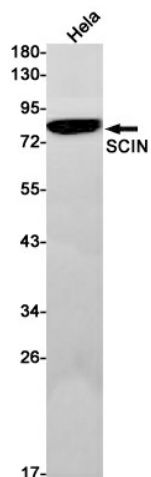
RRAS Rabbit Monoclonal Antibody [Clone ID: R06-7A2]

Product data:

Product Type:	Primary Antibodies
Clone Name:	R06-7A2
Applications:	WB
Recommended Dilution:	WB: 1/1000
Reactivity:	Human
Host:	Rabbit
Isotype:	IgG
Clonality:	Monoclonal
Immunogen:	A synthetic peptide of human RRAS
Formulation:	50mM Tris-Glycine(pH 7.4), 0.15M NaCl, 40% Glycerol, 0.01% Sodium azide and 0.05% BSA
Concentration:	lot specific
Purification:	Affinity Purified
Conjugation:	Unconjugated
Storage:	Store at 4°C short term. Aliquot and store at -20°C long term. Avoid freeze/thaw cycles.
Stability:	1 year
Predicted Protein Size:	Calculated MW: 24 kDa; Observed MW: 24 kDa
Gene Name:	related RAS viral (r-ras) oncogene homolog
Database Link:	Entrez Gene 6237 Human P10301
Background:	Swiss-Prot Acc.P10301.Regulates the organization of the actin cytoskeleton (PubMed:16537651, PubMed:18270267). With OSPBL3, modulates integrin beta-1 (ITGB1) activity (PubMed:18270267).
Synonyms:	p23

[View online »](#)

Product images:



Western blot analysis of RRAS in HeLa lysates using RRAS antibody.