

## Product datasheet for **TA385191M**

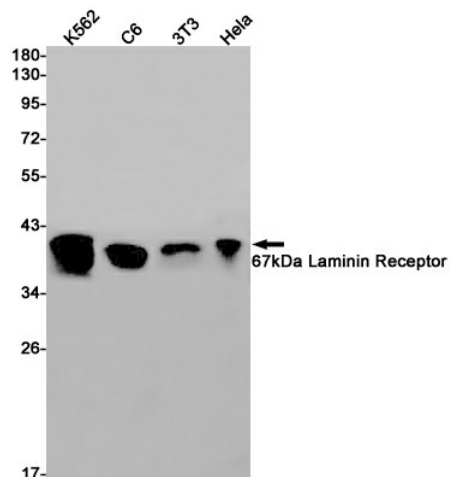
### 67kDa Laminin Receptor (RPSA) Rabbit Monoclonal Antibody [Clone ID: R01-1D4]

#### Product data:

Product Type:	Primary Antibodies
Clone Name:	R01-1D4
Applications:	IP, WB
Recommended Dilution:	WB: 1/1000 IP: 1/20
Reactivity:	Human, Mouse, Rat
Host:	Rabbit
Isotype:	IgG
Clonality:	Monoclonal
Immunogen:	A synthetic peptide of human 67kDa Laminin Receptor
Formulation:	50mM Tris-Glycine(pH 7.4), 0.15M NaCl, 40% Glycerol, 0.01% Sodium azide and 0.05% BSA
Concentration:	lot specific
Purification:	Affinity Purified
Conjugation:	Unconjugated
Storage:	Store at 4°C short term. Aliquot and store at -20°C long term. Avoid freeze/thaw cycles.
Stability:	1 year
Predicted Protein Size:	Calculated MW: 33 kDa; Observed MW: 40 kDa
Gene Name:	ribosomal protein SA
Database Link:	<a href="#">Entrez Gene 3921 Human P08865</a>
Background:	Swiss-Prot Acc.P08865.Required for the assembly and/or stability of the 40S ribosomal subunit. Required for the processing of the 20S rRNA-precursor to mature 18S rRNA in a late step of the maturation of 40S ribosomal subunits. Also functions as a cell surface receptor for laminin. Plays a role in cell adhesion to the basement membrane and in the consequent activation of signaling transduction pathways. May play a role in cell fate determination and tissue morphogenesis. Acts as a PPP1R16B-dependent substrate of PPP1CA.
Synonyms:	37LRP; 67LR; LAMBR; LamR; LAMR1; LBP; LBP/p40; LRP; LRP/LR; NEM/1CHD4; p40


[View online »](#)

## Product images:



Western blot analysis of 67kDa Laminin Receptor in K562, C6, 3T3, HeLa lysates using 67kDa Laminin Receptor antibody.