

Product datasheet for **TA385190S**

P70 S6 Kinase beta (RPS6KB2) Rabbit Monoclonal Antibody [Clone ID: R04-9C1]

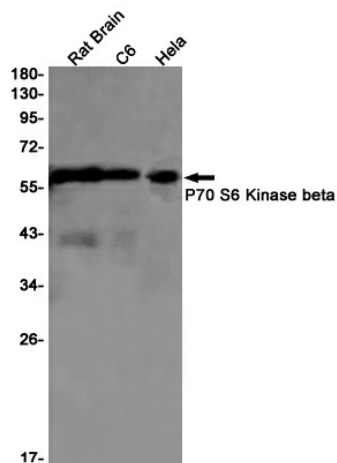
Product data:

Product Type:	Primary Antibodies
Clone Name:	R04-9C1
Applications:	IF, IHC, WB
Recommended Dilution:	WB: 1/2000-1/10000 IHC: 1/20 ICC/IF: 1/50
Reactivity:	Human, Mouse, Rat
Host:	Rabbit
Isotype:	IgG
Clonality:	Monoclonal
Immunogen:	Recombinant protein of human P70 S6 Kinase beta
Formulation:	50mM Tris-Glycine(pH 7.4), 0.15M NaCl, 40% Glycerol, 0.01% Sodium azide and 0.05% BSA
Concentration:	lot specific
Purification:	Affinity Purified
Conjugation:	Unconjugated
Storage:	Store at 4°C short term. Aliquot and store at -20°C long term. Avoid freeze/thaw cycles.
Stability:	1 year
Predicted Protein Size:	Calculated MW: 54 kDa; Observed MW: 54 kDa
Gene Name:	ribosomal protein S6 kinase B2
Database Link:	Entrez Gene 6199 Human Q9UBS0
Background:	Swiss-Prot Acc.Q9UBS0.Phosphorylates specifically ribosomal protein S6.
Synonyms:	KLS; p70(S6K)-beta; P70-beta; P70-beta-1; P70-beta-2; p70-S6KB; p70S6Kb; S6K-beta; S6K-beta2; S6K2; SRK; STK14B

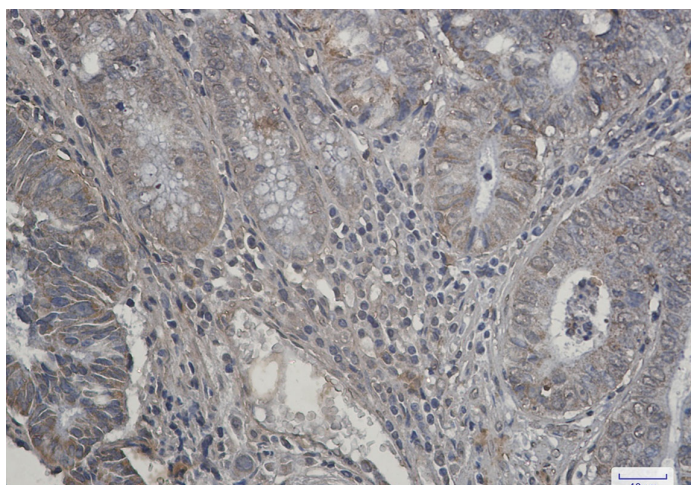


[View online »](#)

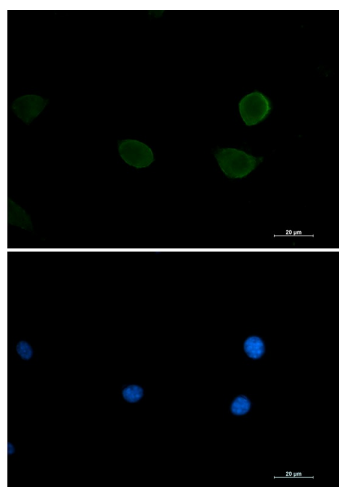
Product images:



Western blot analysis of P70 S6 Kinase beta in rat Brain, C6, HeLa lysates using P70 S6 Kinase beta antibody.



Immunohistochemistry analysis of paraffin-embedded Human colon cancer tissue using P70 S6 Kinase beta antibody. High-pressure and temperature Sodium Citrate pH 6.0 was used for antigen retrieval.



Immunocytochemistry analysis of S6K2 (green) in 3T3 using S6K2 antibody, and DAPI (blue).