

Product datasheet for **TA385190**

P70 S6 Kinase beta (RPS6KB2) Rabbit Monoclonal Antibody [Clone ID: R04-9C1]

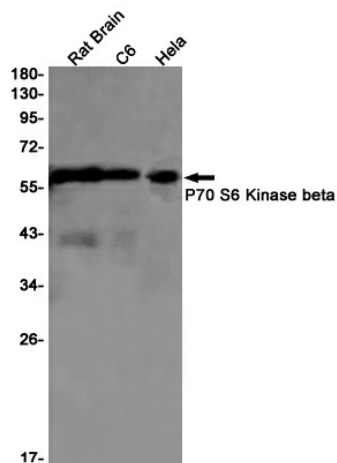
Product data:

| | |
|--------------------------------|---|
| Product Type: | Primary Antibodies |
| Clone Name: | R04-9C1 |
| Applications: | IF, IHC, WB |
| Recommended Dilution: | WB: 1/2000-1/10000 IHC: 1/20 ICC/IF: 1/50 |
| Reactivity: | Human, Mouse, Rat |
| Host: | Rabbit |
| Isotype: | IgG |
| Clonality: | Monoclonal |
| Immunogen: | Recombinant protein of human P70 S6 Kinase beta |
| Formulation: | 50mM Tris-Glycine(pH 7.4), 0.15M NaCl, 40% Glycerol, 0.01% Sodium azide and 0.05% BSA |
| Concentration: | lot specific |
| Purification: | Affinity Purified |
| Conjugation: | Unconjugated |
| Storage: | Store at 4°C short term. Aliquot and store at -20°C long term. Avoid freeze/thaw cycles. |
| Stability: | 1 year |
| Predicted Protein Size: | Calculated MW: 54 kDa; Observed MW: 54 kDa |
| Gene Name: | ribosomal protein S6 kinase B2 |
| Database Link: | Entrez Gene 6199 Human Q9UBS0 |
| Background: | Swiss-Prot Acc.Q9UBS0.Phosphorylates specifically ribosomal protein S6. |
| Synonyms: | KLS; p70(S6K)-beta; P70-beta; P70-beta-1; P70-beta-2; p70-S6KB; p70S6Kb; S6K-beta; S6K-beta2; S6K2; SRK; STK14B |

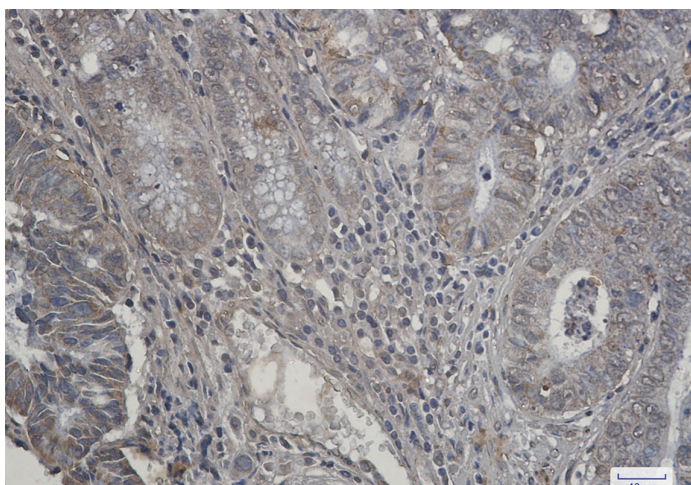


[View online »](#)

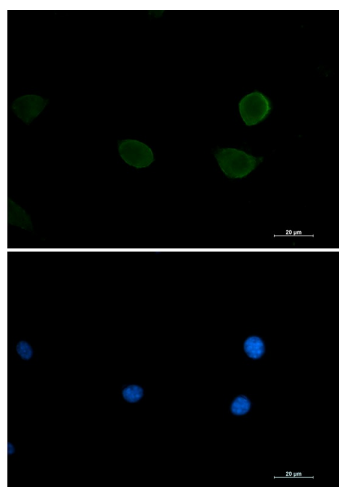
Product images:



Western blot analysis of P70 S6 Kinase beta in rat Brain, C6, HeLa lysates using P70 S6 Kinase beta antibody.



Immunohistochemistry analysis of paraffin-embedded Human colon cancer tissue using P70 S6 Kinase beta antibody. High-pressure and temperature Sodium Citrate pH 6.0 was used for antigen retrieval.



Immunocytochemistry analysis of S6K2 (green) in 3T3 using S6K2 antibody, and DAPI (blue).