

## Product datasheet for **TA385187**

### MSK1 (RPS6KA5) Rabbit Polyclonal Antibody

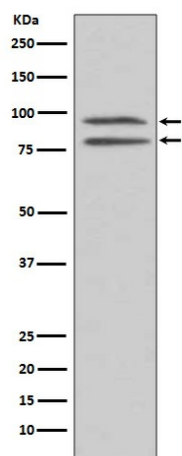
#### Product data:

Product Type:	Primary Antibodies
Applications:	IF, IHC, IP, WB
Recommended Dilution:	WB: 1/500-1/2000 IHC: 1/50-1/200 IP: 1/50
Reactivity:	Human, Rat
Host:	Rabbit
Isotype:	IgG
Clonality:	Polyclonal
Immunogen:	A synthesized peptide derived from human Phospho-MSK1 (S376) (Phosphorylated)
Formulation:	Rabbit IgG in phosphate buffered saline , pH 7.4, 150mM NaCl, 0.02% sodium azide and 50% glycerol.
Concentration:	lot specific
Purification:	Affinity Chromatography
Conjugation:	Unconjugated
Storage:	Store at 4°C short term. Aliquot and store at -20°C long term. Avoid freeze/thaw cycles.
Stability:	1 year
Predicted Protein Size:	90kDa
Gene Name:	ribosomal protein S6 kinase A5
Database Link:	<a href="#">Entrez Gene 9252 Human O75582</a>
Background:	Swiss-Prot Acc.O75582.Serine/threonine-protein kinase that is required for the mitogen or stress-induced phosphorylation of the transcription factors CREB1 and ATF1 and for the regulation of the transcription factors RELA, STAT3 and ETV1/ER81, and that contributes to gene activation by histone phosphorylation and functions in the regulation of inflammatory genes. Phosphorylates CREB1 and ATF1 in response to mitogenic or stress stimuli such as UV-C irradiation, epidermal growth factor (EGF) and anisomycin.
Synonyms:	MGC1911; MSK1; MSPK1; RLPK; RSKL

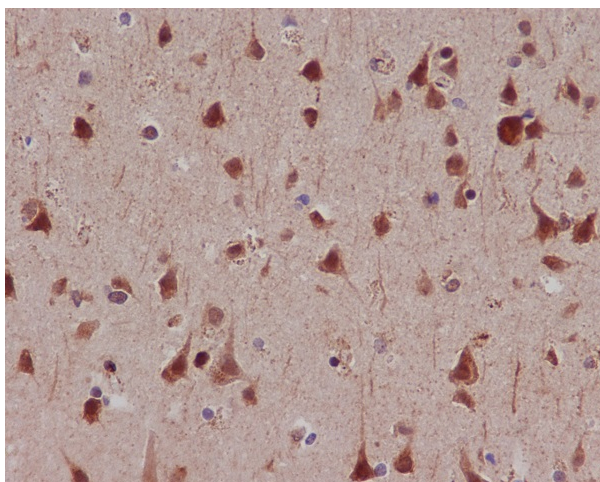


[View online »](#)

## Product images:



Western blot analysis of Phospho-MSK1 (S376) in HEK293 lysates treated with EGF using Phospho-MSK1 (Ser376) antibody.



Immunohistochemistry analysis of paraffin-embedded Human lung cancer using Phospho-MSK1 (S376) antibody. High-pressure and temperature Sodium Citrate pH 6.0 was used for antigen retrieval.