

Product datasheet for **TA385182S**

RPS6 Rabbit Monoclonal Antibody [Clone ID: R05-3A4]

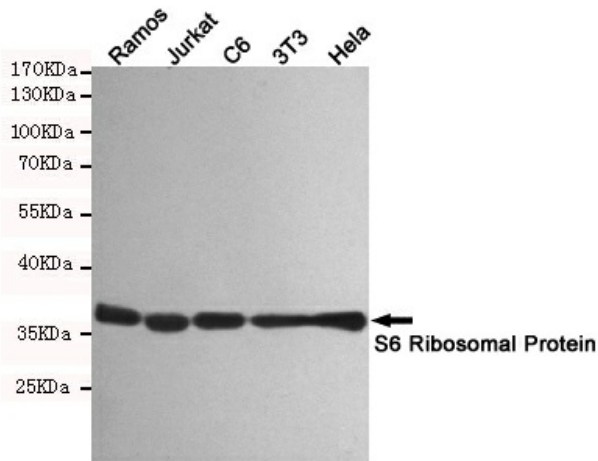
Product data:

Product Type:	Primary Antibodies
Clone Name:	R05-3A4
Applications:	IF, IHC, IP, WB
Recommended Dilution:	WB: 1/1000 IHC: 1/50 ICC/IF: 1/100 IP: 1/20
Reactivity:	Human, Mouse, Rat
Host:	Rabbit
Isotype:	IgG
Clonality:	Monoclonal
Immunogen:	Synthetic peptide derived from human S6 Ribosomal Protein.
Formulation:	50mM Tris-Glycine(pH 7.4), 0.15M NaCl, 40% Glycerol, 0.01% Sodium azide and 0.05% BSA
Concentration:	lot specific
Purification:	Affinity Purified
Conjugation:	Unconjugated
Storage:	Store at 4°C short term. Aliquot and store at -20°C long term. Avoid freeze/thaw cycles.
Stability:	1 year
Predicted Protein Size:	Calculated MW: 29 kDa; Observed MW: 29 kDa
Gene Name:	ribosomal protein S6
Database Link:	Entrez Gene 6194 Human P62753
Background:	Swiss-Prot Acc.P62753.May play an important role in controlling cell growth and proliferation through the selective translation of particular classes of mRNA.
Synonyms:	RPS6

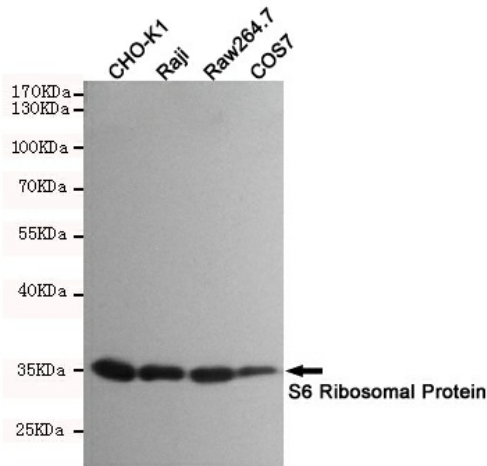


[View online »](#)

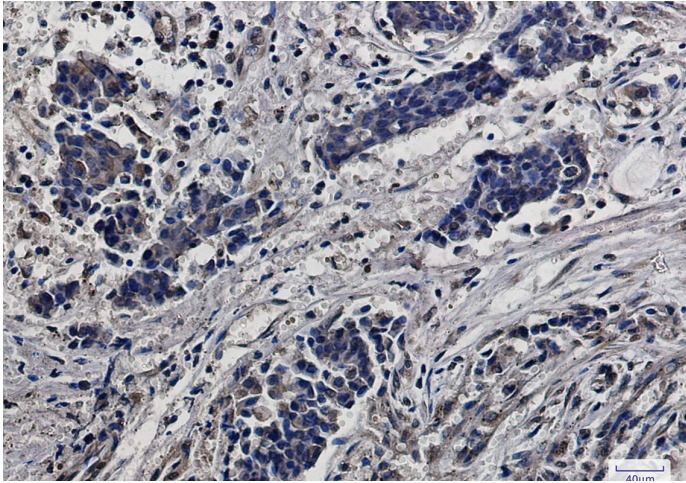
Product images:



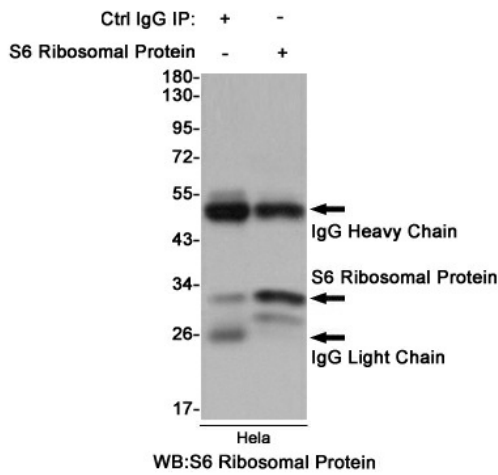
Western blot analysis of S6 Ribosomal Protein in Ramos, Jurkat, C6, 3T3 and HeLa lysates using S6 Ribosomal Protein antibody.



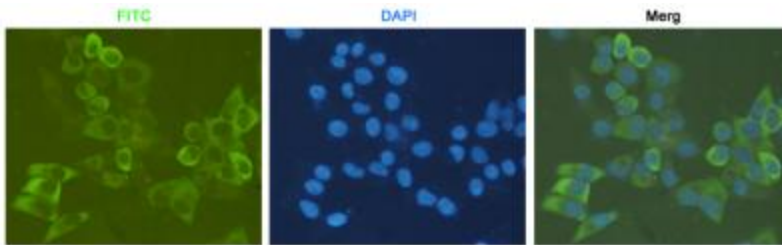
Western blot analysis of S6 Ribosomal Protein in CHO-K1, Raji, Raw264.7 and COS7 lysates using S6 Ribosomal Protein antibody.



Immunohistochemistry analysis of paraffin-embedded Human breast cancer using RPS6 antibody. High-pressure and temperature Sodium Citrate pH 6.0 was used for antigen retrieval.



Immunoprecipitation analysis of HeLa cell lysates using S6 Ribosomal Protein antibody.



Immunocytochemistry analysis of HeLa using antiS6 Ribosomal Protein antibody.