

Product datasheet for **TA385182M**

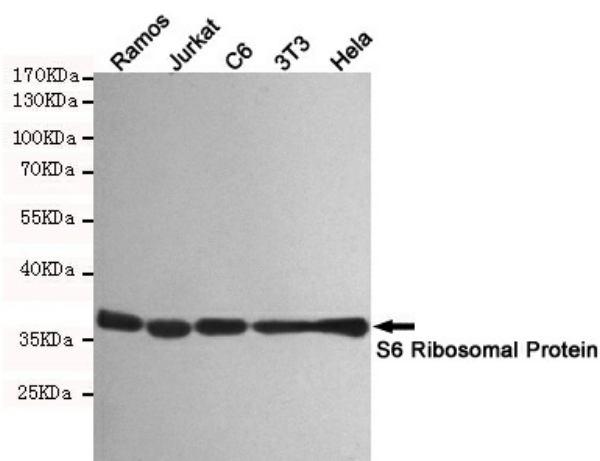
RPS6 Rabbit Monoclonal Antibody [Clone ID: R05-3A4]

Product data:

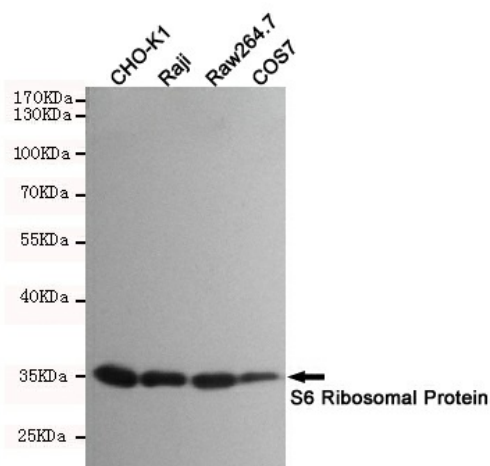
Product Type:	Primary Antibodies
Clone Name:	R05-3A4
Applications:	IF, IHC, IP, WB
Recommended Dilution:	WB: 1/1000 IHC: 1/50 ICC/IF: 1/100 IP: 1/20
Reactivity:	Human, Mouse, Rat
Host:	Rabbit
Isotype:	IgG
Clonality:	Monoclonal
Immunogen:	Synthetic peptide derived from human S6 Ribosomal Protein.
Formulation:	50mM Tris-Glycine(pH 7.4), 0.15M NaCl, 40% Glycerol, 0.01% Sodium azide and 0.05% BSA
Concentration:	lot specific
Purification:	Affinity Purified
Conjugation:	Unconjugated
Storage:	Store at 4°C short term. Aliquot and store at -20°C long term. Avoid freeze/thaw cycles.
Stability:	1 year
Predicted Protein Size:	Calculated MW: 29 kDa; Observed MW: 29 kDa
Gene Name:	ribosomal protein S6
Database Link:	Entrez Gene 6194 Human P62753
Background:	Swiss-Prot Acc.P62753.May play an important role in controlling cell growth and proliferation through the selective translation of particular classes of mRNA.
Synonyms:	RPS6

[View online »](#)

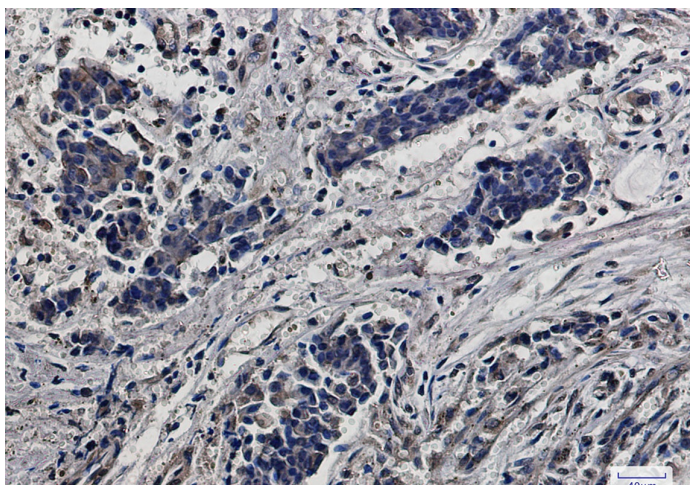
Product images:



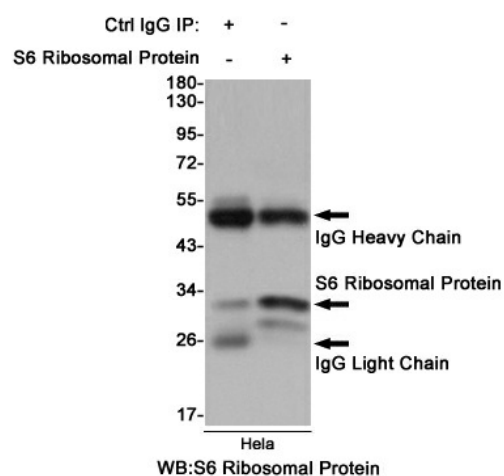
Western blot analysis of S6 Ribosomal Protein in Ramos, Jurkat, C6, 3T3 and HeLa lysates using S6 Ribosomal Protein antibody.



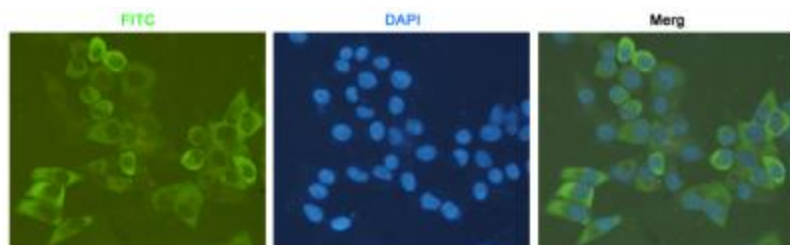
Western blot analysis of S6 Ribosomal Protein in CHO-K1, Raji, Raw264.7 and COS7 lysates using S6 Ribosomal Protein antibody.



Immunohistochemistry analysis of paraffin-embedded Human breast cancer using RPS6 antibody. High-pressure and temperature Sodium Citrate pH 6.0 was used for antigen retrieval.



Immunoprecipitation analysis of HeLa cell lysates using S6 Ribosomal Protein antibody.



Immunocytochemistry analysis of HeLa using anti-S6 Ribosomal Protein antibody.