

Product datasheet for **TA385181M**

RPS6 Mouse Monoclonal Antibody [Clone ID: 7B10-E11-E11]

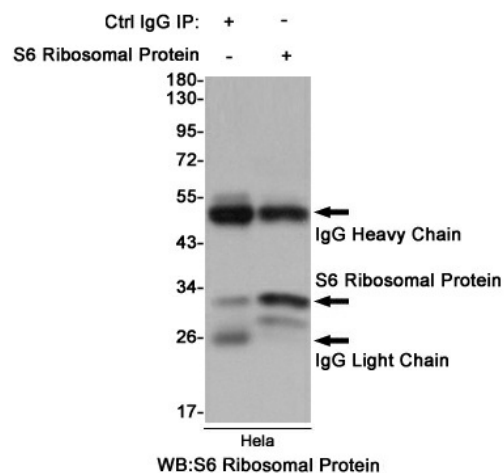
Product data:

Product Type:	Primary Antibodies
Clone Name:	7B10-E11-E11
Applications:	IF, IP, WB
Recommended Dilution:	WB: 1/2000 ICC: 1/200 IP:1/20
Reactivity:	Human, Mouse, Rat, Monkey
Host:	Mouse
Isotype:	IgG1
Clonality:	Monoclonal
Immunogen:	Synthetic peptide derived from human S6 Ribosomal Protein.
Formulation:	Liquid in PBS containing 50% glycerol, 0.5% BSA and 0.03% Proclin 300, pH 7.3.
Concentration:	lot specific
Purification:	Affinity Purified
Conjugation:	Unconjugated
Storage:	Store at 4°C short term. Aliquot and store at -20°C long term. Avoid freeze/thaw cycles.
Stability:	1 year
Predicted Protein Size:	32kDa
Gene Name:	ribosomal protein S6
Database Link:	Entrez Gene 6194 Human P62753
Background:	Swiss-Prot Acc.P62753.May play an important role in controlling cell growth and proliferation through the selective translation of particular classes of mRNA.
Synonyms:	RPS6

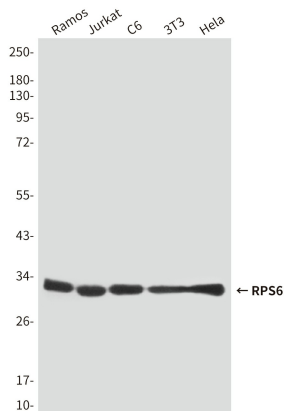


[View online »](#)

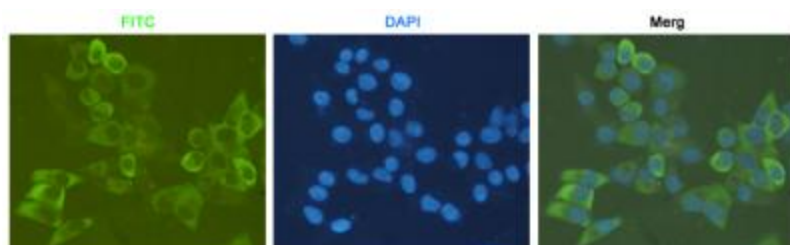
Product images:



Immunoprecipitation analysis of HeLa cell lysates using S6 Ribosomal Protein Mouse mAb.



Western blot analysis of S6 Ribosomal Protein in Ramos, Jurkat, C6, 3T3 and HeLa lysates using S6 Ribosomal Protein antibody.



Immunocytochemistry staining of HeLa cells fixed with 4% Paraformaldehyde and using anti-S6 Ribosomal Protein mouse mAb (dilution 1:200).