

Product datasheet for **TA385180S**

RPS20 Rabbit Monoclonal Antibody [Clone ID: R08-2A0]

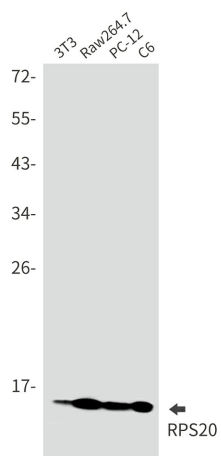
Product data:

Product Type:	Primary Antibodies
Clone Name:	R08-2A0
Applications:	IHC, WB
Recommended Dilution:	WB: 1/1000 IHC: 1/50
Reactivity:	Human, Mouse, Rat, Hamster
Host:	Rabbit
Isotype:	IgG
Clonality:	Monoclonal
Immunogen:	A synthetic peptide of human RPS20
Formulation:	50mM Tris-Glycine(pH 7.4), 0.15M NaCl, 40% Glycerol, 0.01% Sodium azide and 0.05% BSA
Concentration:	lot specific
Purification:	Affinity Purified
Conjugation:	Unconjugated
Storage:	Store at 4°C short term. Aliquot and store at -20°C long term. Avoid freeze/thaw cycles.
Stability:	1 year
Predicted Protein Size:	Calculated MW:13 kDa,Observed MW:13 kDa
Gene Name:	ribosomal protein S20
Database Link:	Entrez Gene 6224 Human P60866
Synonyms:	FLJ27451; MGC102930

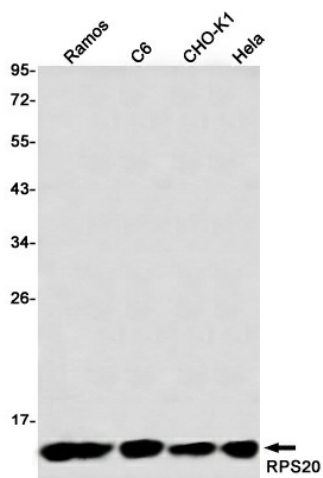


[View online »](#)

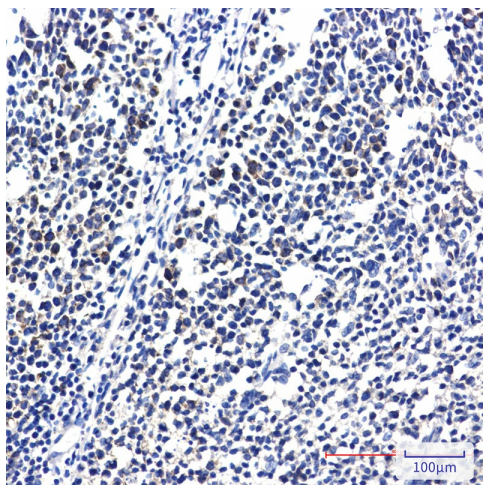
Product images:



Western blot analysis of RPS20 in 3T3, Raw264.7, PC-12, C6 lysates using RPS20 antibody.



Western blot analysis of RPS20 in HeLa, CHO-K1, C6, Ramos lysates using RPS20 antibody.



Immunohistochemistry analysis of paraffin-embedded Human tonsil using RPS20 antibody. High-pressure and temperature Sodium Citrate pH 6.0 was used for antigen retrieval.