

## Product datasheet for **TA385178S**

### RPL7 Rabbit Polyclonal Antibody

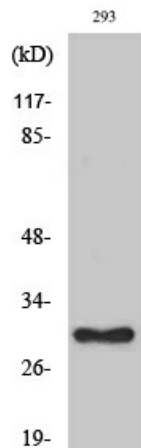
#### Product data:

Product Type:	Primary Antibodies
Applications:	ELISA, IHC, WB
Recommended Dilution:	WB: 1/500-1/2000 IHC: 1/100-1/300 ELISA: 1/10000
Reactivity:	Human, Mouse, Rat
Host:	Rabbit
Isotype:	IgG
Clonality:	Polyclonal
Immunogen:	The antiserum was produced against synthesized peptide derived from human RPL7. AA range:199-248
Formulation:	Liquid in PBS containing 50% glycerol, 0.5% BSA and 0.02% sodium azide, pH 7.3.
Concentration:	lot specific
Purification:	Affinity Chromatography
Conjugation:	Unconjugated
Storage:	Store at 4°C short term. Aliquot and store at -20°C long term. Avoid freeze/thaw cycles.
Stability:	1 year
Predicted Protein Size:	Observed MW (kDa):32
Database Link:	<a href="#">P18124</a>
Background:	Swiss-Prot Acc.P18124.Component of the large ribosomal subunit (PubMed:12962325). Binds to G-rich structures in 28S rRNA and in mRNAs. Plays a regulatory role in the translation apparatus; inhibits cell-free translation of mRNAs.

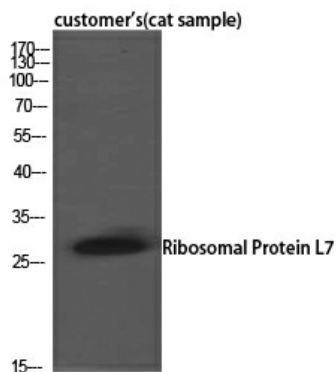


[View online »](#)

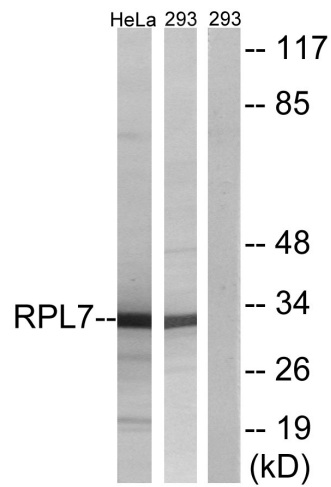
Product images:



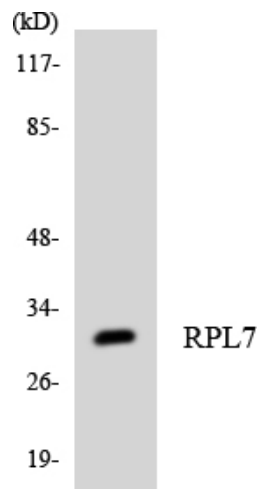
Western blot analysis of RPL7 in various lysates using RPL7 antibody.



Western Blot analysis of customer's (cat sample) using Ribosomal Protein L7 Polyclonal Antibody. Antibody was diluted at 1:2000



Western blot analysis of lysates from 293 and HeLa cells, using RPL7 Antibody. The lane on the right is blocked with the synthesized peptide.



Western blot analysis of the lysates from K562 cells using RPL7 antibody.