

Product datasheet for **TA385177**

RPA3 Rabbit Polyclonal Antibody

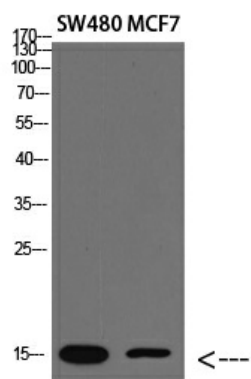
Product data:

| | |
|-------------------------|--|
| Product Type: | Primary Antibodies |
| Applications: | ELISA, WB |
| Recommended Dilution: | WB: 1/500-2000 ELISA: 1/10000-20000 |
| Reactivity: | Human, Mouse |
| Host: | Rabbit |
| Isotype: | IgG |
| Clonality: | Polyclonal |
| Immunogen: | Synthetic peptide from human protein at AA range: 30-80 |
| Formulation: | Liquid in PBS containing 50% glycerol, 0.5% BSA and 0.02% sodium azide, pH 7.3. |
| Concentration: | lot specific |
| Purification: | Affinity Purified |
| Conjugation: | Unconjugated |
| Storage: | Store at 4°C short term. Aliquot and store at -20°C long term. Avoid freeze/thaw cycles. |
| Stability: | 1 year |
| Predicted Protein Size: | Observed MW(kDa):14 |
| Database Link: | P35244 |
| Background: | Swiss-Prot Acc.P35244. |



[View online »](#)

Product images:



Western blot analysis of RPA3 in SW480, MCF-7 lysates using RPA3 antibody.