

Product datasheet for **TA385173**

ROCK2 Rabbit Polyclonal Antibody

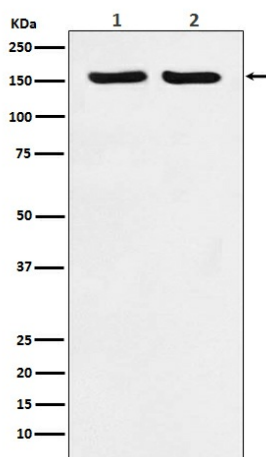
Product data:

Product Type:	Primary Antibodies
Applications:	IF, WB
Recommended Dilution:	WB: 1/1000-1/5000 ICC/IF: 1/50-1/200
Reactivity:	Human, Mouse, Rat
Host:	Rabbit
Isotype:	IgG
Clonality:	Polyclonal
Immunogen:	A synthesized peptide derived from human ROCK2
Formulation:	Rabbit IgG in phosphate buffered saline , pH 7.4, 150mM NaCl, 0.02% sodium azide and 50% glycerol.
Concentration:	lot specific
Purification:	Affinity Chromatography
Conjugation:	Unconjugated
Storage:	Store at 4°C short term. Aliquot and store at -20°C long term. Avoid freeze/thaw cycles.
Stability:	1 year
Predicted Protein Size:	161kDa
Gene Name:	Rho associated coiled-coil containing protein kinase 2
Database Link:	Entrez Gene 9475 Human O75116
Background:	Swiss-Prot Acc.O75116.Regulates the assembly of the actin cytoskeleton. Promotes formation of stress fibers and of focal adhesion complexes. Plays a role in smooth muscle contraction.
Synonyms:	KIAA0619



[View online »](#)

Product images:



Western blot analysis of ROCK2 in (1) HeLa lysates; (2) RAW264.7 lysates using ROCK2 antibody.