

Product datasheet for **TA385170M**

Relaxin 1 (RLN1) Rabbit Monoclonal Antibody [Clone ID: R05-7A5]

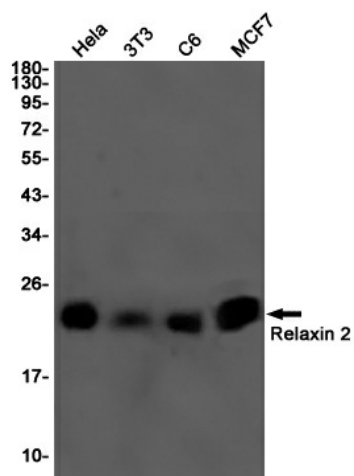
Product data:

Product Type:	Primary Antibodies
Clone Name:	R05-7A5
Applications:	IHC, WB
Recommended Dilution:	WB: 1/1000 IHC: 1/100
Reactivity:	Human, Mouse, Rat
Host:	Rabbit
Isotype:	IgG
Clonality:	Monoclonal
Immunogen:	A synthetic peptide of human Relaxin 2
Formulation:	50mM Tris-Glycine(pH 7.4), 0.15M NaCl, 40% Glycerol, 0.01% Sodium azide and 0.05% BSA
Concentration:	lot specific
Purification:	Affinity Purified
Conjugation:	Unconjugated
Storage:	Store at 4°C short term. Aliquot and store at -20°C long term. Avoid freeze/thaw cycles.
Stability:	1 year
Predicted Protein Size:	Calculated MW: 21 kDa; Observed MW: 21 kDa
Gene Name:	relaxin 1
Database Link:	Entrez Gene 6013 Human P04090
Background:	Swiss-Prot Acc.P04090.Relaxin is an ovarian hormone that acts with estrogen to produce dilatation of the birth canal in many mammals. May be involved in remodeling of connective tissues during pregnancy, promoting growth of pubic ligaments and ripening of the cervix.
Synonyms:	bA12D24.3.1; bA12D24.3.2; H1; prorelaxin; RLXH1

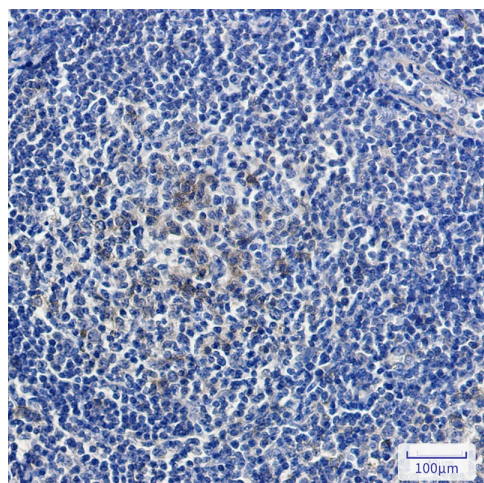


[View online »](#)

Product images:



Western blot analysis of Relaxin 2 in HeLa, 3T3, C6, MCF-7 lysates using Relaxin 2 antibody.



Immunohistochemistry analysis of paraffin-embedded Human tonsil using Relaxin 2/RLN2 antibody. High-pressure and temperature Sodium Citrate pH 6.0 was used for antigen retrieval.