

## Product datasheet for **TA385168M**

### **RHOC Rabbit Polyclonal Antibody**

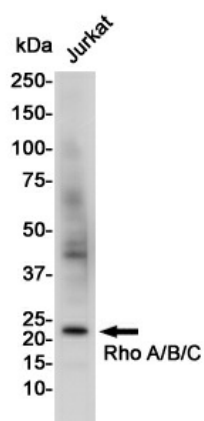
#### **Product data:**

Product Type:	Primary Antibodies
Applications:	FC, IF, IHC, WB
Recommended Dilution:	WB: 1/1000 IHC: 1/500 ICC/IF: 1/100 FC: 1/50
Reactivity:	Human
Host:	Rabbit
Isotype:	IgG
Clonality:	Polyclonal
Immunogen:	Recombinant protein of human Rho C
Formulation:	50mM Tris-Glycine(pH 7.4), 0.15M NaCl, 40% Glycerol, 0.01% Sodium azide and 0.05% BSA
Concentration:	lot specific
Purification:	Affinity Purified
Conjugation:	Unconjugated
Storage:	Store at 4°C short term. Aliquot and store at -20°C long term. Avoid freeze/thaw cycles.
Stability:	1 year
Predicted Protein Size:	Calculated MW: 22 kDa; Observed MW: 22 kDa
Gene Name:	ras homolog family member C
Database Link:	<a href="#">Entrez Gene 389 Human P61586</a>
Background:	Swiss-Prot Acc.P08134.
Synonyms:	ARH9; ARHC; H9; MGC1448; MGC61427; OTTHUMP00000013802; OTTHUMP00000013805; OTTHUMP00000013807; RHOH9

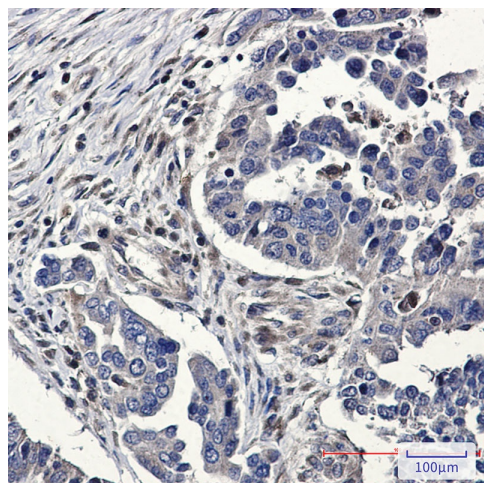


[View online »](#)

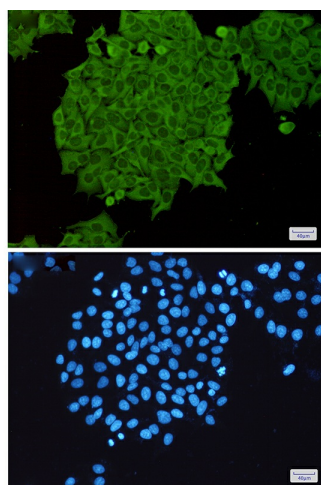
## Product images:



Western blot analysis of RhoA/B/C in Jurkat lysates using RhoA/B/C antibody.



Immunohistochemistry analysis of paraffin-embedded Human Cholangiocarcinoma using RhoA/B/C antibody. High-pressure and temperature Sodium Citrate pH 6.0 was used for antigen retrieval.



Immunocytochemistry analysis of Rho A/B/C(green) in HeLa using Rho A/B/C antibody, and DAPI(blue)