

Product datasheet for **TA385167S**

RHOC Rabbit Polyclonal Antibody

Product data:

Product Type:	Primary Antibodies
Applications:	FC, IF, IHC, WB
Recommended Dilution:	WB: 1/500-1/2000 IHC: 1/500-1/1000 ICC/IF: 1/100-1/500 FC: 1/200
Reactivity:	Human, Mouse, Rat
Host:	Rabbit
Isotype:	IgG
Clonality:	Polyclonal
Immunogen:	A synthesized peptide derived from human Rho A + B + C
Formulation:	Rabbit IgG in phosphate buffered saline , pH 7.4, 150mM NaCl, 0.02% sodium azide and 50% glycerol.
Concentration:	lot specific
Purification:	Affinity Chromatography
Conjugation:	Unconjugated
Storage:	Store at 4°C short term. Aliquot and store at -20°C long term. Avoid freeze/thaw cycles.
Stability:	1 year
Predicted Protein Size:	22kDa
Gene Name:	ras homolog family member C
Database Link:	Entrez Gene 389 Human P61586



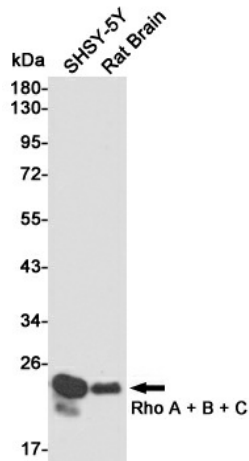
[View online »](#)

Background:

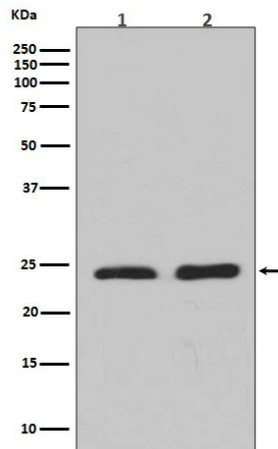
Swiss-Prot Acc.P61586,P62745,P08134.RhoA,RhoB,RhoC is a small G protein of the Rho family. Regulates a signal transduction pathway linking plasma membrane receptors to the assembly of focal adhesions and actin stress fibers. The three mammalian Rho proteins (A, B and C) are approximately 30% homologous to Ras and are expressed in a wide range of cell types. Both Ras p21 and Rho p21, as well as other members of the Ras superfamily, contain a carboxy terminal CAAX sequence (C, cysteine; A, aliphatic amino acid; X, any amino acid) which in the case of Ras has been shown to be essential for correct localization and function.

Synonyms:

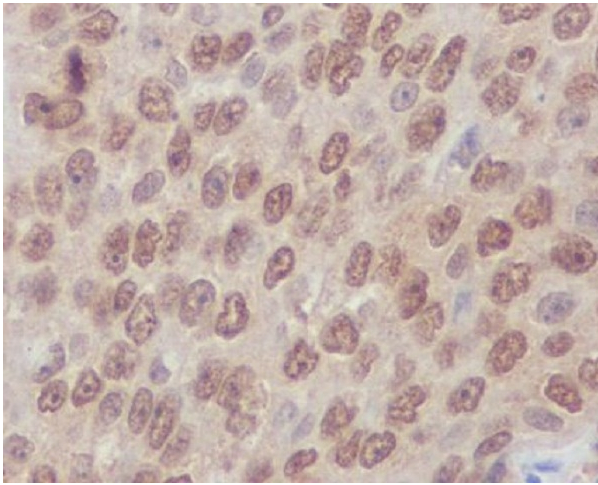
ARH9; ARHC; H9; MGC1448; MGC61427; OTTHUMP00000013802; OTTHUMP00000013805; OTTHUMP00000013807; RHOH9

Product images:


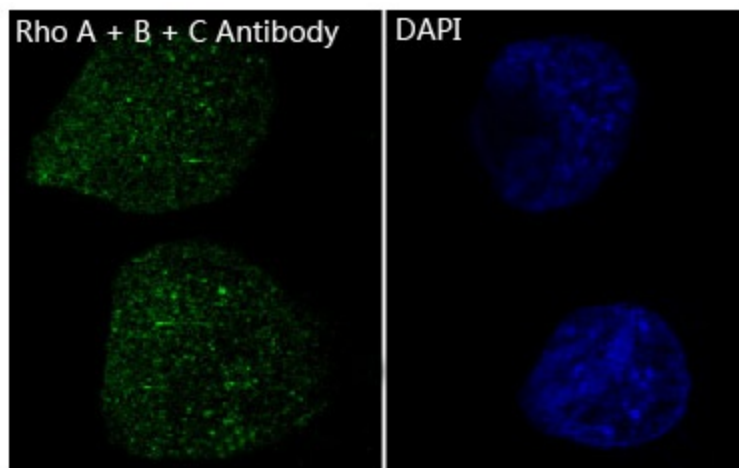
Western blot analysis of Rho A + B + C in SH-SY5Y and rat Brain lysates using Rho A + B + C antibody.



Western blot analysis of Rho A + B + C expression in (1) Jurkat lysates; (2) NIH/3T3 lysates using RhoA/B/C antibody



Immunohistochemistry analysis of paraffin-embedded Human lung carcinoma using Rho A + B + C antibody. High-pressure and temperature Sodium Citrate pH 6.0 was used for antigen retrieval.



Immunofluorescent analysis of RhoA/B/C in HeLa using RhoA/B/C antibody.