

## Product datasheet for **TA385166M**

### **RHOA Rabbit Polyclonal Antibody**

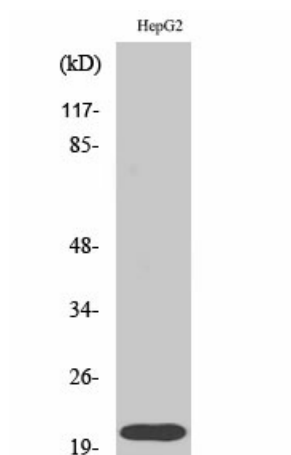
#### **Product data:**

Product Type:	Primary Antibodies
Applications:	ELISA, IF, IHC, WB
Recommended Dilution:	IF: 1/50-200 WB: 1/500-1/2000 IHC: 1/100-1/300 ELISA: 1/5000
Reactivity:	Human, Mouse, Rat
Host:	Rabbit
Isotype:	IgG
Clonality:	Polyclonal
Immunogen:	The antiserum was produced against synthesized peptide derived from human RhoA. AA range:144-193
Formulation:	Liquid in PBS containing 50% glycerol, 0.5% BSA and 0.02% sodium azide, pH 7.3.
Concentration:	lot specific
Purification:	Affinity Purified
Conjugation:	Unconjugated
Storage:	Store at 4°C short term. Aliquot and store at -20°C long term. Avoid freeze/thaw cycles.
Stability:	1 year
Predicted Protein Size:	Observed MW (kDa):22
Gene Name:	ras homolog family member A
Database Link:	<a href="#">Entrez Gene 387 Human P61586</a>
Background:	Swiss-Prot Acc.P61586.
Synonyms:	ARH12; ARHA; H12; RHO12; RHOH12

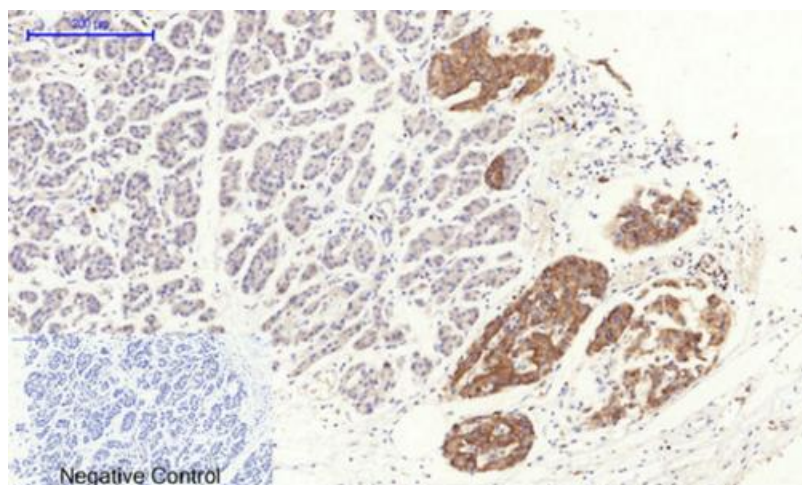


[View online »](#)

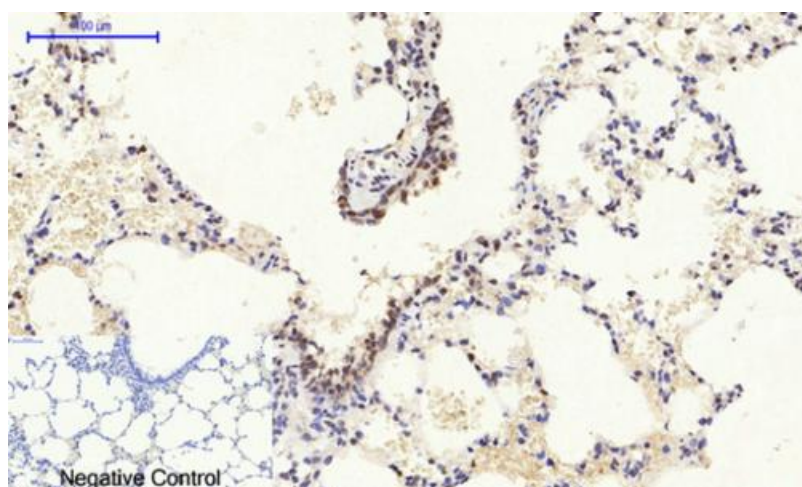
## Product images:



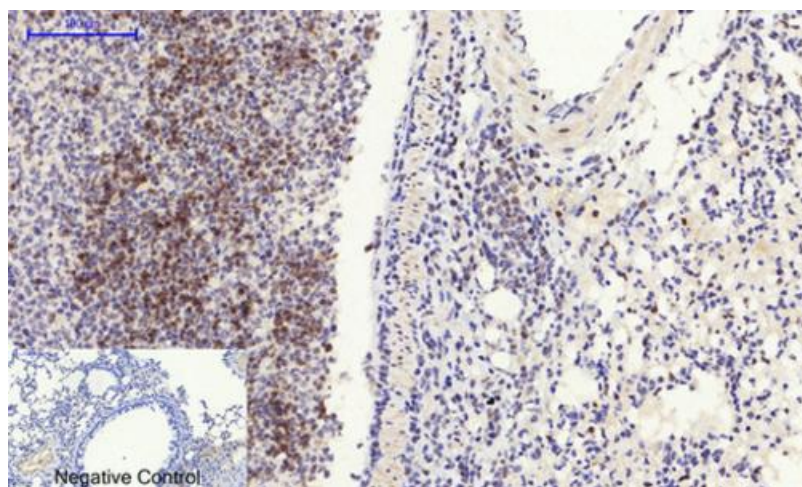
Western blot analysis of RhoA in HepG2 lysates using RhoA antibody.



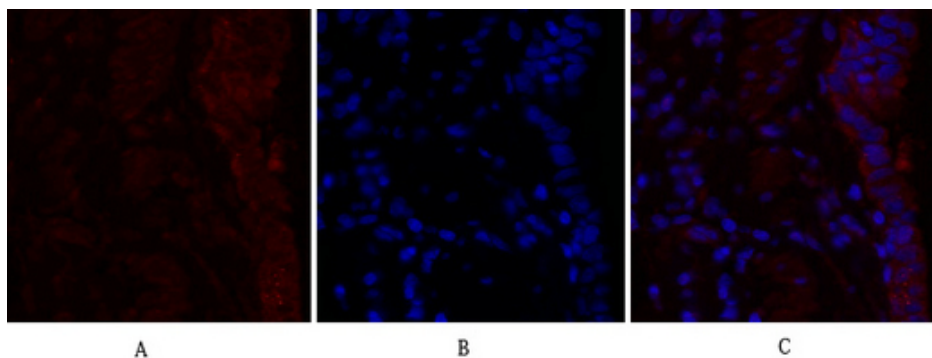
Immunohistochemistry analysis of paraffin-embedded Human stomach cancer tissue using Rho A antibody. High-pressure and temperature Sodium Citrate pH 6.0 was used for antigen retrieval. Negative control was used by secondary antibody only.



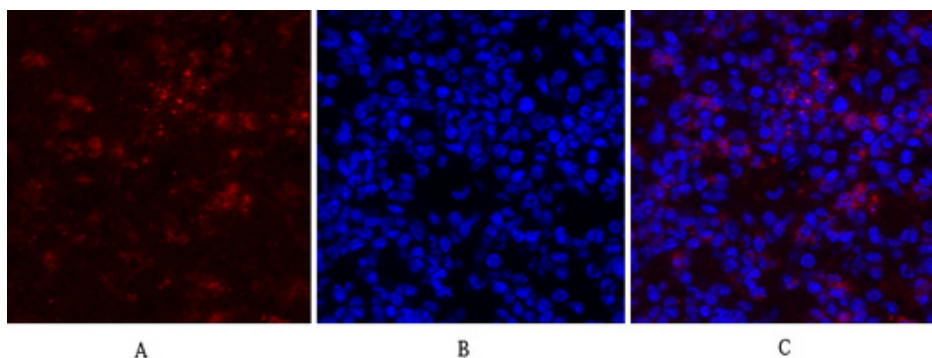
Immunohistochemistry analysis of paraffin-embedded rat lung tissue using RhoA antibody. High-pressure and temperature Sodium Citrate pH 6.0 was used for antigen retrieval. Negative control was used by secondary antibody.



Immunohistochemistry analysis of paraffin-embedded mouse lung tissue using RhoA antibody. High-pressure and temperature Sodium Citrate pH 6.0 was used for antigen retrieval. Negative control was used by secondary antibody only.



Immunofluorescence analysis of RhoA in rat lung using RhoA antibody (red), and DAPI (blue).



Immunofluorescence analysis of RhoA in mouse lung using Rho A antibody(red),and DAPI (blue)