

Product datasheet for **TA385162**

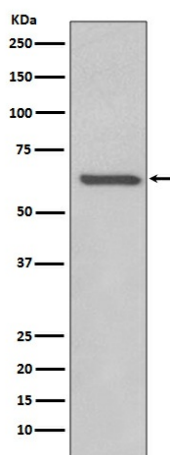
Rel B (RELB) Rabbit Polyclonal Antibody

Product data:

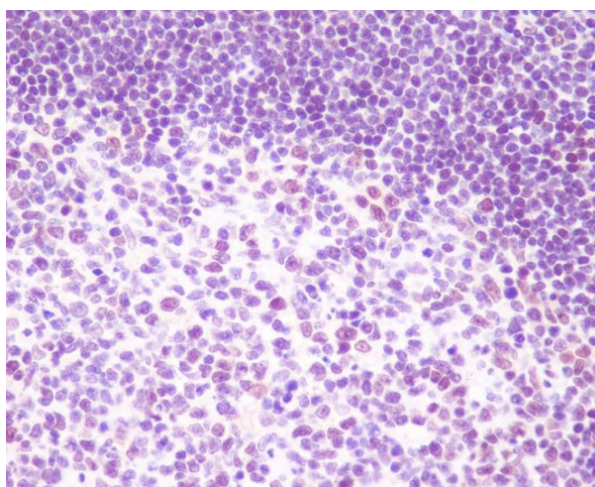
Product Type:	Primary Antibodies
Applications:	IF, IHC, IP, WB
Recommended Dilution:	WB: 1/500-1/1000 IHC: 1/50-1/200 ICC: 1/50-1/200
Reactivity:	Human
Host:	Rabbit
Isotype:	IgG
Clonality:	Polyclonal
Immunogen:	A synthesized peptide derived from human RelB
Formulation:	Rabbit IgG in phosphate buffered saline , pH 7.4, 150mM NaCl, 0.02% sodium azide and 50% glycerol.
Concentration:	lot specific
Purification:	Affinity Chromatography
Conjugation:	Unconjugated
Storage:	Store at 4°C short term. Aliquot and store at -20°C long term. Avoid freeze/thaw cycles.
Stability:	1 year
Predicted Protein Size:	70kDa
Gene Name:	RELB proto-oncogene, NF-κB subunit
Database Link:	Entrez Gene 5971 Human Q01201
Background:	Swiss-Prot Acc.Q01201.Transcription factors of the nuclear factor κB (NF-κB)/Rel family play a pivotal role in inflammatory and immune responses. Involved in many biological processes such as inflammation, immunity, differentiation, cell growth, tumorigenesis and apoptosis.
Synonyms:	I-REL; IREL; REL-B



[View online »](#)

Product images:

Western blot analysis of RelB in Raji lysates using Rel B antibody.



Immunohistochemistry analysis of paraffin-embedded Human tonsil using RelB antibody. High-pressure and temperature Sodium Citrate pH 6.0 was used for antigen retrieval.