

## Product datasheet for **TA385159S**

### NF- $\kappa$ B p65 (RELA) Rabbit Polyclonal Antibody

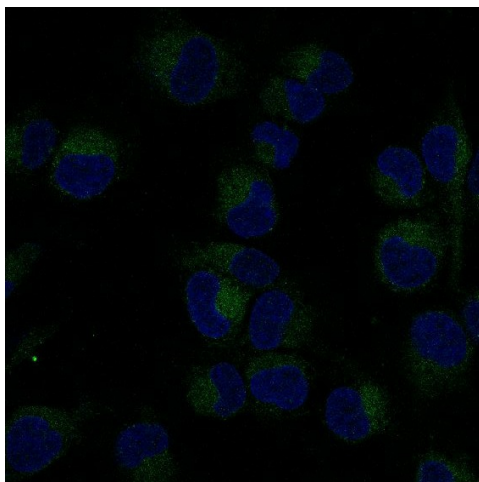
#### Product data:

Product Type:	Primary Antibodies
Applications:	FC, IF, IHC, IP, WB
Recommended Dilution:	WB: 1/1000 IHC: 1/50-1/100 ICC/IF: 1/50-1/100
Reactivity:	Human, Mouse
Host:	Rabbit
Isotype:	IgG
Clonality:	Polyclonal
Immunogen:	A synthesized peptide derived from human NF- $\kappa$ B p65
Formulation:	Rabbit IgG in phosphate buffered saline , pH 7.4, 150mM NaCl, 0.02% sodium azide and 50% glycerol.
Concentration:	lot specific
Purification:	Affinity Chromatography
Conjugation:	Unconjugated
Storage:	Store at 4°C short term. Aliquot and store at -20°C long term. Avoid freeze/thaw cycles.
Stability:	1 year
Predicted Protein Size:	65kDa
Gene Name:	RELA proto-oncogene, NF- $\kappa$ B subunit
Database Link:	<a href="#">Entrez Gene 5970 Human Q04206</a>
Background:	Swiss-Prot Acc.Q04206.NFKB1 (MIM 164011) or NFKB2 (MIM 164012) is bound to REL (MIM 164910), RELA, or RELB (MIM 604758) to form the NFKB complex. The p50 (NFKB1)/p65 (RELA) heterodimer is the most abundant form of NFKB. The NFKB complex is inhibited by I-kappa-B proteins (NFKBIA, MIM 164008 or NFKBIB, MIM 604495), which inactivate NFKB by trapping it in the cytoplasm.
Synonyms:	MGC131774; NFKB3; p65

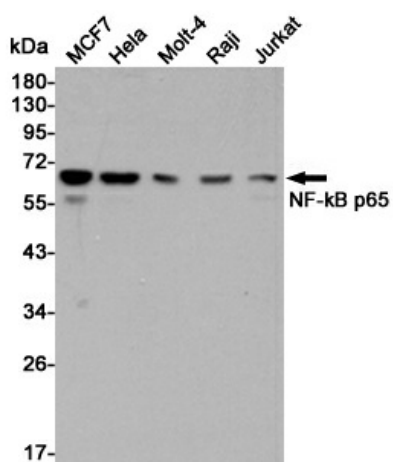


[View online »](#)

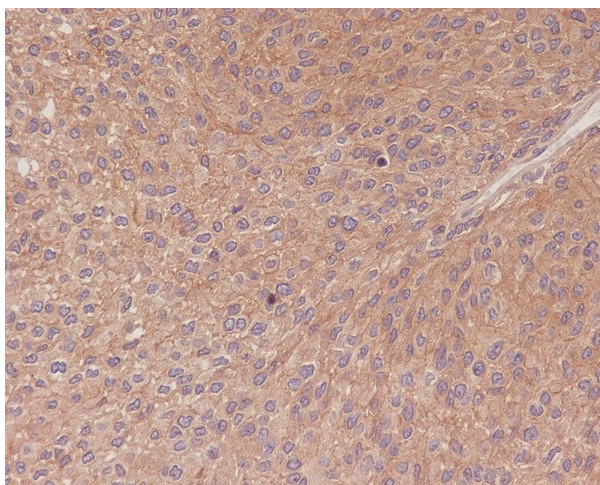
## Product images:



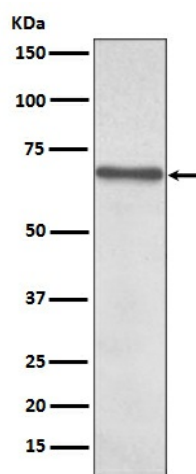
Immunofluorescent analysis of HT-1080 cells, using NF- $\kappa$ B p65 Antibody .



Western blot analysis of NF- $\kappa$ B p65 expression in MCF7, HeLa, Molt-4, Raji and Jurkat cell lysates using NF- $\kappa$ B p65 antibody at 1/5000 dilution. Predicted band size: 65 kDa. Observed band size: 65 kDa.



Immunohistochemical analysis of paraffin-embedded human transitional cell carcinoma of bladder, using NF- $\kappa$ B p65 Antibody.



Western blot analysis of NF- $\kappa$ B p65 expression in HeLa cell lysate.