

Product datasheet for **TA385158**

NF-kB p65 (RELA) Rabbit Polyclonal Antibody

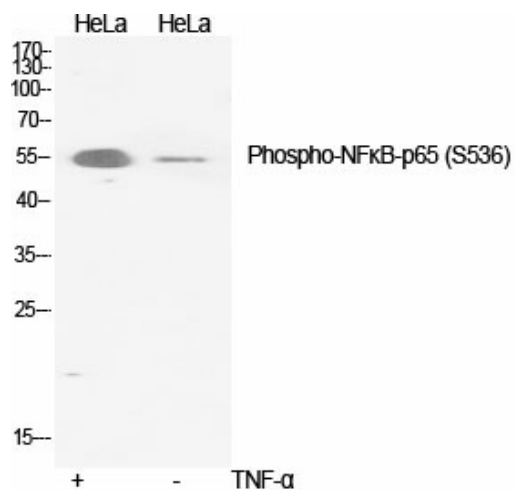
Product data:

Product Type:	Primary Antibodies
Applications:	ELISA, IF, IHC, IP, WB
Recommended Dilution:	IF: 1/50-200 WB: 1/500-1/2000 IHC: 1/100-1/300 Immunoprecipitation: 2-5 ELISA: 1/10000
Reactivity:	Human, Mouse, Rat, Monkey
Host:	Rabbit
Isotype:	IgG
Clonality:	Polyclonal
Immunogen:	The antiserum was produced against synthesized peptide derived from human NF-kappaB p65 around the phosphorylation site of Ser536. AA range:502-551 (Phosphorylated)
Formulation:	Liquid in PBS containing 50% glycerol, 0.5% BSA and 0.02% sodium azide, pH 7.3.
Concentration:	lot specific
Purification:	Affinity Purified
Conjugation:	Unconjugated
Storage:	Store at 4°C short term. Aliquot and store at -20°C long term. Avoid freeze/thaw cycles.
Stability:	1 year
Predicted Protein Size:	Observed MW (kDa):60
Gene Name:	RELA proto-oncogene, NF-kB subunit
Database Link:	Entrez Gene 5970 Human Q04206
Background:	Swiss-Prot Acc.Q04206.
Synonyms:	MGC131774; NFKB3; p65



[View online »](#)

Product images:



Western blot analysis of Phospho-NF-KB p65 (Ser536) in various lysates using Phospho-NF-KB p65 (Ser536) antibody.