

Product datasheet for **TA385152M**

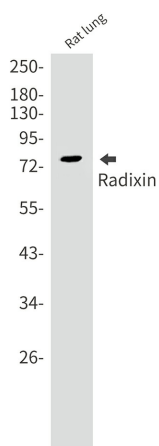
Radixin (RDX) Rabbit Monoclonal Antibody [Clone ID: R06-4J5]

Product data:

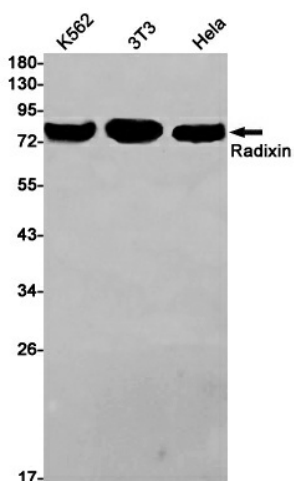
Product Type:	Primary Antibodies
Clone Name:	R06-4J5
Applications:	IHC, IP, WB
Recommended Dilution:	WB: 1/1000 IHC: 1/50 IP: 1/20
Reactivity:	Human, Mouse, Rat
Host:	Rabbit
Isotype:	IgG
Clonality:	Monoclonal
Immunogen:	A synthetic peptide of human Radixin
Formulation:	50mM Tris-Glycine(pH 7.4), 0.15M NaCl, 40% Glycerol, 0.01% Sodium azide and 0.05% BSA
Concentration:	lot specific
Purification:	Affinity Purified
Conjugation:	Unconjugated
Storage:	Store at 4°C short term. Aliquot and store at -20°C long term. Avoid freeze/thaw cycles.
Stability:	1 year
Predicted Protein Size:	Calculated MW: 69 kDa; Observed MW: 80 kDa
Gene Name:	radixin
Database Link:	Entrez Gene 5962 Human P35241
Background:	Swiss-Prot Acc.P35241.Probably plays a crucial role in the binding of the barbed end of actin filaments to the plasma membrane.
Synonyms:	DFNB24; radixin

[View online »](#)

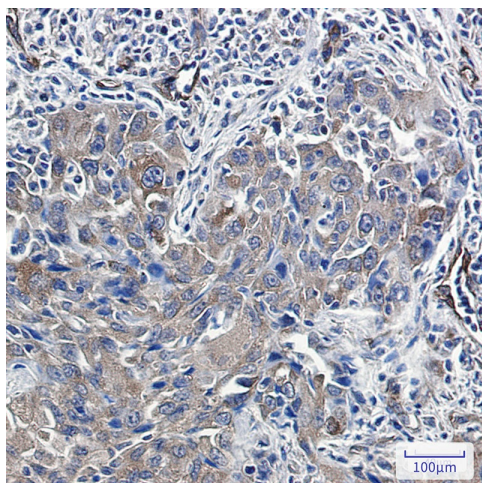
Product images:



Western blot analysis of Radixin in rat lung lysates using Radixin antibody.



Western blot analysis of Radixin in K562, 3T3, HeLa lysates using Radixin antibody.



Immunohistochemistry analysis of paraffin-embedded Human lung cancer using Radixin antibody. High-pressure and temperature Sodium Citrate pH 6.0 was used for antigen retrieval.