

Product datasheet for **TA385151**

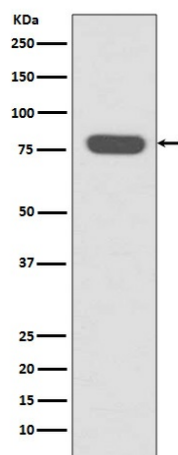
Radixin (RDX) Rabbit Polyclonal Antibody

Product data:

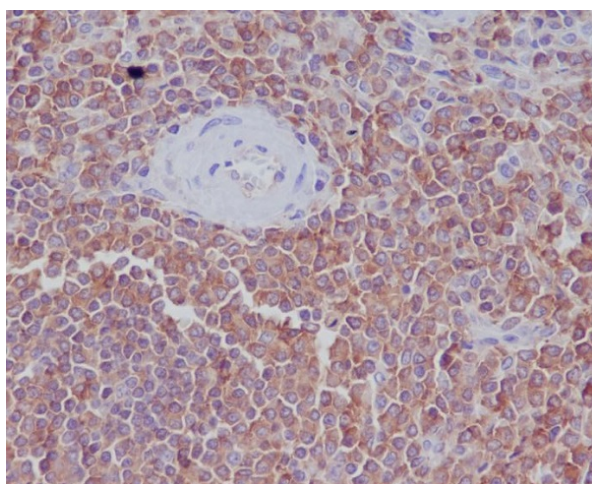
Product Type:	Primary Antibodies
Applications:	FC, IF, IHC, IP, WB
Recommended Dilution:	WB: 1/1000 IHC: 1/50-1/200 ICC/IF: 1/50-1/200 IP: 1/100 FC: 1/100
Reactivity:	Human, Mouse, Rat
Host:	Rabbit
Isotype:	IgG
Clonality:	Polyclonal
Immunogen:	A synthesized peptide derived from human Radixin
Formulation:	Rabbit IgG in phosphate buffered saline , pH 7.4, 150mM NaCl, 0.02% sodium azide and 50% glycerol.
Concentration:	lot specific
Purification:	Affinity Chromatography
Conjugation:	Unconjugated
Storage:	Store at 4°C short term. Aliquot and store at -20°C long term. Avoid freeze/thaw cycles.
Stability:	1 year
Predicted Protein Size:	80kDa
Gene Name:	radixin
Database Link:	Entrez Gene 5962 Human P35241
Background:	Swiss-Prot Acc.P35241.Probably plays a crucial role in the binding of the barbed end of actin filaments to the plasma membrane.
Synonyms:	DFNB24; radixin



[View online »](#)

Product images:

Western blot analysis of Radixin in HeLa lysates using Radixin antibody.



Immunohistochemistry analysis of paraffin-embedded Human spleen using Radixin antibody. High-pressure and temperature Sodium Citrate pH 6.0 was used for antigen retrieval.