

Product datasheet for **TA385150S**

ROC1 (RBX1) Rabbit Monoclonal Antibody [Clone ID: R07-3F6]

Product data:

Product Type:	Primary Antibodies
Clone Name:	R07-3F6
Applications:	IF, IHC, IP, WB
Recommended Dilution:	WB: 1/1000 IHC: 1/500 ICC/IF: 1/50 IP: 1/20
Reactivity:	Human, Mouse, Rat
Host:	Rabbit
Isotype:	IgG
Clonality:	Monoclonal
Immunogen:	A synthetic peptide of human ROC1
Formulation:	50mM Tris-Glycine(pH 7.4), 0.15M NaCl, 40% Glycerol, 0.01% Sodium azide and 0.05% BSA
Concentration:	lot specific
Purification:	Affinity Purified
Conjugation:	Unconjugated
Storage:	Store at 4°C short term. Aliquot and store at -20°C long term. Avoid freeze/thaw cycles.
Stability:	1 year
Predicted Protein Size:	Calculated MW: 12 kDa; Observed MW: 12 kDa
Gene Name:	ring-box 1
Database Link:	Entrez Gene 9978 Human P62877



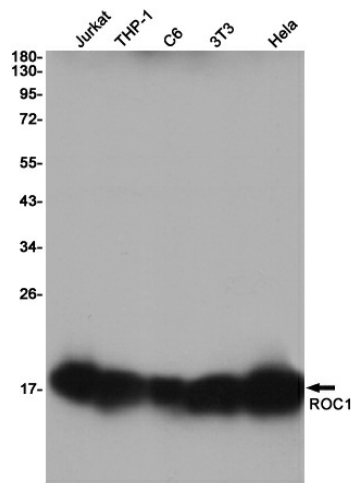
[View online »](#)

Background:

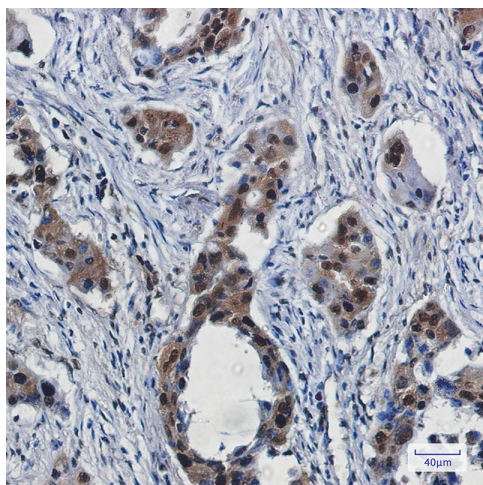
Swiss-Prot Acc.P62877.E3 ubiquitin ligase component of multiple cullin-RING-based E3 ubiquitin-protein ligase (CRLs) complexes which mediate the ubiquitination and subsequent proteasomal degradation of target proteins, including proteins involved in cell cycle progression, signal transduction, transcription and transcription-coupled nucleotide excision repair (PubMed:10230407, PubMed:10579999, PubMed:15983046, PubMed:16678110, PubMed:19112177, PubMed:19679664, PubMed:23455478, PubMed:27565346, PubMed:29769719, PubMed:11961546, PubMed:22748924). CRLs complexes and ARIH1 collaborate in tandem to mediate ubiquitination of target proteins, ARIH1 mediating addition of the first ubiquitin on CRLs targets (PubMed:27565346). The functional specificity of the E3 ubiquitin-protein ligase complexes depends on the variable substrate recognition components. As a component of the CSA complex promotes the ubiquitination of ERCC6 resulting in proteasomal degradation. Recruits the E2 ubiquitin-conjugating enzyme CDC34 to the complex and brings it into close proximity to the substrate. Probably also stimulates CDC34 autoubiquitination. May be required for histone H3 and histone H4 ubiquitination in response to ultraviolet and for subsequent DNA repair. Promotes the neddylation of CUL1, CUL2, CUL4 and CUL4 via its interaction with UBE2M. Involved in the ubiquitination of KEAP1, ENC1 and KLHL41. In concert with ATF2 and CUL3, promotes degradation of KAT5 thereby attenuating its ability to acetylate and activate ATM.

Synonyms:

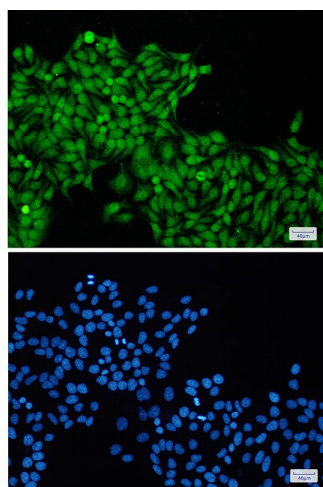
BA554C12.1; MGC1481; MGC13357; RNF75; ROC1

Product images:

Western blot analysis of ROC1 in Jurkat, THP-1, C6, 3T3, HeLa lysates using RBX1 antibody.



Immunohistochemistry analysis of paraffin-embedded Human lung cancer using ROC1 antibody. High-pressure and temperature Sodium Citrate pH 6.0 was used for antigen retrieval.



Immunocytochemistry analysis of ROC1 (green) in HeLa using ROC1 antibody, and DAPI (blue)