

Product datasheet for **TA385147**

RBPJK (RBPJ) Rabbit Polyclonal Antibody

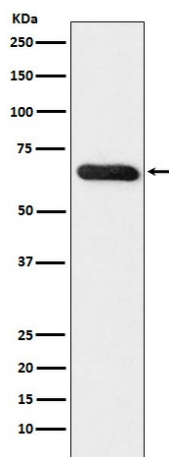
Product data:

Product Type:	Primary Antibodies
Applications:	IF, WB
Recommended Dilution:	WB: 1/500-1/2000 ICC/IF: 1/50-1/200
Reactivity:	Human, Mouse, Rat
Host:	Rabbit
Isotype:	IgG
Clonality:	Polyclonal
Immunogen:	A synthesized peptide derived from human RBPJK
Formulation:	Rabbit IgG in phosphate buffered saline , pH 7.4, 150mM NaCl, 0.02% sodium azide and 50% glycerol.
Concentration:	lot specific
Purification:	Affinity Chromatography
Conjugation:	Unconjugated
Storage:	Store at 4°C short term. Aliquot and store at -20°C long term. Avoid freeze/thaw cycles.
Stability:	1 year
Predicted Protein Size:	60kDa
Gene Name:	recombination signal binding protein for immunoglobulin kappa J region
Database Link:	Entrez Gene 3516 Human Q06330
Background:	Swiss-Prot Acc.Q06330.Transcriptional regulator that plays a central role in Notch signaling, a signaling pathway involved in cell-cell communication that regulates a broad spectrum of cell-fate determinations. Acts as a transcriptional repressor when it is not associated with Notch proteins.
Synonyms:	CBF-1; CBF1; csl; IGKJRB; IGKJRB1; KBF2; MGC61669; OTTHUMP00000123441; RBP-J; RBP-JK; RBPJK; RBPSUH; SUH



[View online »](#)

Product images:



Western blot analysis of RBPJK in MCF-7 lysates using RBPJK antibody.