

Product datasheet for **TA385145S**

Rb2 p130 (RBL2) Rabbit Monoclonal Antibody [Clone ID: R02-5D6]

Product data:

Product Type:	Primary Antibodies
Clone Name:	R02-5D6
Applications:	IF, IHC, WB
Recommended Dilution:	WB: 1/2000-1/10000 IHC: 1/20-1/100 ICC/IF: 1/20-1/100
Reactivity:	Human
Host:	Rabbit
Isotype:	IgG
Clonality:	Monoclonal
Immunogen:	A synthetic phosphopeptide corresponding to residues surrounding Ser952 of human Rb2 p130 (Phosphorylated)
Formulation:	50mM Tris-Glycine(pH 7.4), 0.15M NaCl, 40% Glycerol, 0.01% Sodium azide and 0.05% BSA
Concentration:	lot specific
Purification:	Affinity Purified
Conjugation:	Unconjugated
Storage:	Store at 4°C short term. Aliquot and store at -20°C long term. Avoid freeze/thaw cycles.
Stability:	1 year
Predicted Protein Size:	Calculated MW: 128 kDa; Observed MW: 130 kDa
Gene Name:	RB transcriptional corepressor like 2
Database Link:	Entrez Gene 5934 Human Q08999



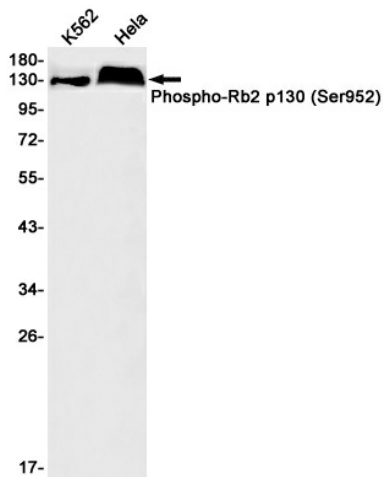
[View online »](#)

Background:

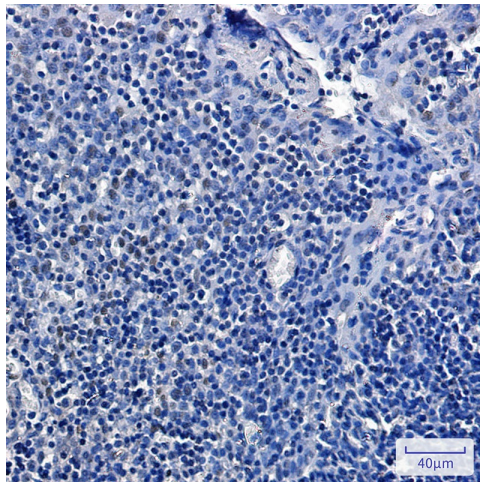
Swiss-Prot Acc.Q08999. Key regulator of entry into cell division. Directly involved in heterochromatin formation by maintaining overall chromatin structure and, in particular, that of constitutive heterochromatin by stabilizing histone methylation. Recruits and targets histone methyltransferases KMT5B and KMT5C, leading to epigenetic transcriptional repression. Controls histone H4 'Lys-20' trimethylation. Probably acts as a transcription repressor by recruiting chromatin-modifying enzymes to promoters. Potent inhibitor of E2F-mediated trans-activation, associates preferentially with E2F5. Binds to cyclins A and E. Binds to and may be involved in the transforming capacity of the adenovirus E1A protein. May act as a tumor suppressor.

Synonyms:

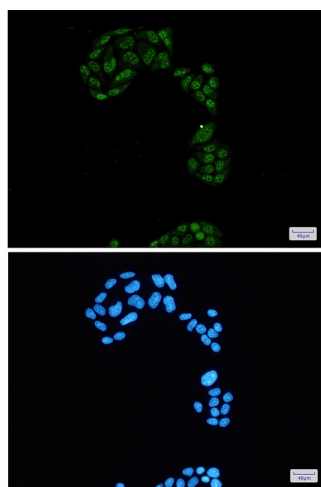
FLJ26459; p130; PRB2; Rb2; RBR-2

Product images:


Western blot analysis of Rb2 p130 (Phospho-Ser952) in K562, HeLa lysates using Phospho-Rb2 p130 (Ser952) antibody.



Immunohistochemistry analysis of paraffin-embedded Human tonsil using Rb2 p130 (Phospho-Ser952) antibody. High-pressure and temperature Sodium Citrate pH 6.0 was used for antigen retrieval.



Immunocytochemistry analysis of Rb2 p130 (Phospho-Ser952)(green) in HeLa using Rb2 p130 (Phospho-Ser952) antibody, and DAPI(blue)