

## Product datasheet for **TA385142M**

### **RbAp48 (RBBP4) Rabbit Monoclonal Antibody [Clone ID: R07-5D6]**

#### **Product data:**

Product Type:	Primary Antibodies
Clone Name:	R07-5D6
Applications:	IF, IHC, IP, WB
Recommended Dilution:	WB: 1/2000-1/10000 IHC: 1/20 ICC/IF: 1/20 IP: 1/20
Reactivity:	Human, Mouse, Rat, Hamster
Host:	Rabbit
Isotype:	IgG
Clonality:	Monoclonal
Immunogen:	A synthetic peptide of human RbAp48
Formulation:	50mM Tris-Glycine(pH 7.4), 0.15M NaCl, 40% Glycerol, 0.01% Sodium azide and 0.05% BSA
Concentration:	lot specific
Purification:	Affinity Purified
Conjugation:	Unconjugated
Storage:	Store at 4°C short term. Aliquot and store at -20°C long term. Avoid freeze/thaw cycles.
Stability:	1 year
Predicted Protein Size:	Calculated MW: 48 kDa; Observed MW: 48 kDa
Gene Name:	RB binding protein 4, chromatin remodeling factor
Database Link:	<a href="#">Entrez Gene 5928 Human Q09028</a>

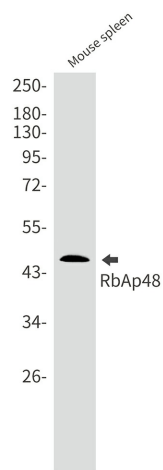
[View online »](#)

**Background:**

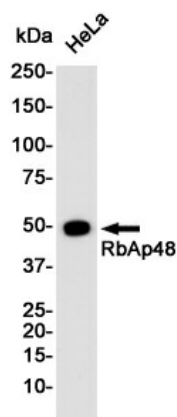
Swiss-Prot Acc.Q09028.Core histone-binding subunit that may target chromatin assembly factors, chromatin remodeling factors and histone deacetylases to their histone substrates in a manner that is regulated by nucleosomal DNA. Component of several complexes which regulate chromatin metabolism. These include the chromatin assembly factor 1 (CAF-1) complex, which is required for chromatin assembly following DNA replication and DNA repair; the core histone deacetylase (HDAC) complex, which promotes histone deacetylation and consequent transcriptional repression; the nucleosome remodeling and histone deacetylase complex (the NuRD complex), which promotes transcriptional repression by histone deacetylation and nucleosome remodeling; the PRC2/EED-EZH2 complex, which promotes repression of homeotic genes during development; and the NURF (nucleosome remodeling factor) complex.

**Synonyms:**

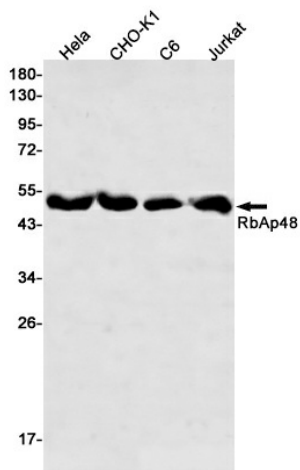
NURF55; RBAP48; RBBP-4

**Product images:**


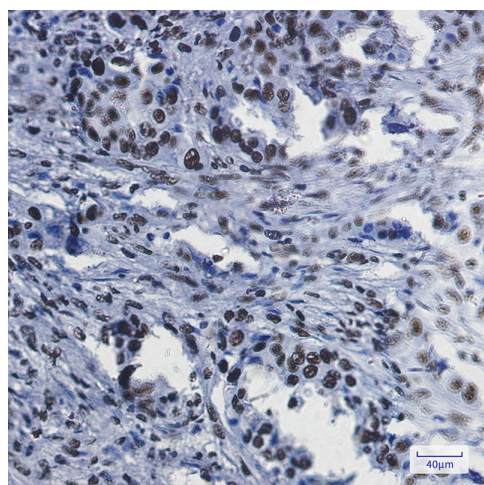
Western blot analysis of RbAp48 in mouse spleen lysates using RBBP4 antibody.



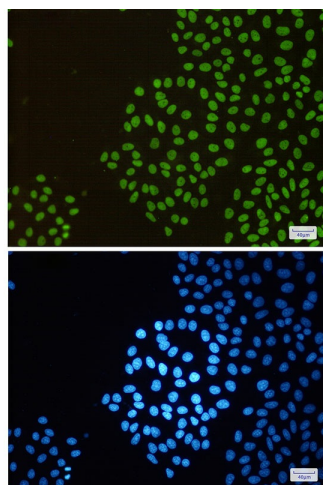
Western blot analysis of RbAp48 in HeLa lysates using RbAp48 antibody.



Western blot analysis of RbAp48 in HeLa, CHO-K1, C6, Jurkat lysates using RbAp48 antibody



Immunohistochemistry analysis of paraffin-embedded Human lung cancer using RbAp48 antibody. High-pressure and temperature Sodium Citrate pH 6.0 was used for antigen retrieval.



Immunocytochemistry analysis of RbAp48 (green) in HeLa using RbAp48 antibody, and DAPI (blue). High-pressure and temperature Sodium Citrate pH 6.0 was used for antigen retrieval.