

Product datasheet for **TA385141S**

RbAp48 (RBBP4) Rabbit Polyclonal Antibody

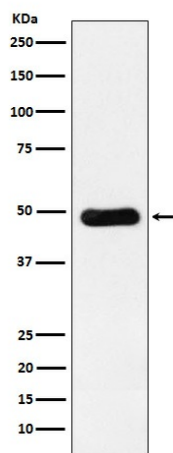
Product data:

Product Type:	Primary Antibodies
Applications:	FC, IF, IHC, IP, WB
Recommended Dilution:	WB: 1/1000-1/5000 IHC: 1/50-1/200 ICC/IF: 1/50-1/200 IP: 1/50 FC: 1/50
Reactivity:	Human, Mouse, Rat
Host:	Rabbit
Isotype:	IgG
Clonality:	Polyclonal
Immunogen:	A synthesized peptide derived from human RbAp48
Formulation:	Rabbit IgG in phosphate buffered saline , pH 7.4, 150mM NaCl, 0.02% sodium azide and 50% glycerol.
Concentration:	lot specific
Purification:	Affinity Chromatography
Conjugation:	Unconjugated
Storage:	Store at 4°C short term. Aliquot and store at -20°C long term. Avoid freeze/thaw cycles.
Stability:	1 year
Predicted Protein Size:	48kDa
Gene Name:	RB binding protein 4, chromatin remodeling factor
Database Link:	Entrez Gene 5928 Human Q09028
Background:	Core histone-binding subunit that may target chromatin assembly factors, chromatin remodeling factors and histone deacetylases to their histone substrates in a manner that is regulated by nucleosomal DNA. Component of several complexes which regulate chromatin metabolism.
Synonyms:	NURF55; RBAP48; RBBP-4

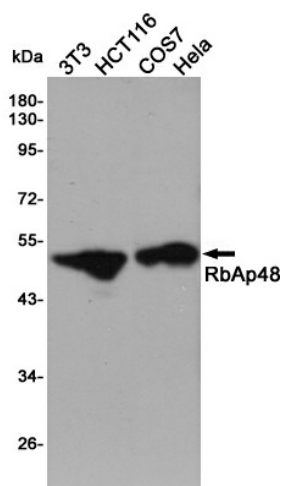


[View online »](#)

Product images:



Western blot analysis of RbAp48 in Jurkat lysates using RBBP4 antibody.



Western blot analysis of RBBP4 in 3T3, HCT116, COS7 and HeLa lysates using RbAp48 antibody.