

Product datasheet for **TA385138**

Rb (RB1) Rabbit Polyclonal Antibody

Product data:

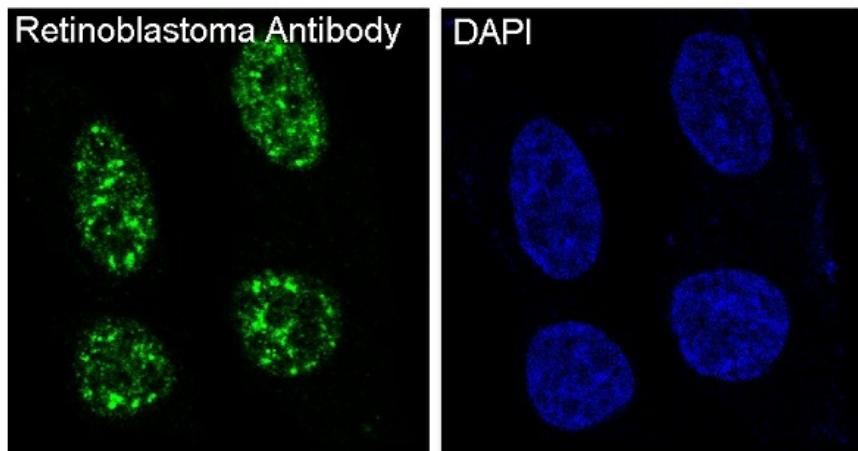
| | |
|-------------------------|---|
| Product Type: | Primary Antibodies |
| Applications: | IF, IHC, IP, WB |
| Recommended Dilution: | WB: 1/1000-1/2000 IHC: 1/100-1/500 ICC/IF: 1/100-1/500 IP: 1/50 |
| Reactivity: | Human, Mouse |
| Host: | Rabbit |
| Isotype: | IgG |
| Clonality: | Polyclonal |
| Immunogen: | A synthesized peptide derived from human Retinoblastoma |
| Formulation: | Rabbit IgG in phosphate buffered saline , pH 7.4, 150mM NaCl, 0.02% sodium azide and 50% glycerol. |
| Concentration: | lot specific |
| Purification: | Affinity Chromatography |
| Conjugation: | Unconjugated |
| Storage: | Store at 4°C short term. Aliquot and store at -20°C long term. Avoid freeze/thaw cycles. |
| Stability: | 1 year |
| Predicted Protein Size: | 105kDa |
| Gene Name: | RB transcriptional corepressor 1 |
| Database Link: | Entrez Gene 5925 Human P06400 |
| Background: | Swiss-Prot Acc.P06400.The retinoblastoma tumor suppressor protein, Rb, regulates cell proliferation by controlling progression through the restriction point within the G1-phase of the cell cycle. Rb has three functionally distinct binding domains and interacts with critical regulatory proteins including the E2F family of transcription factors, c-Abl tyrosine kinase, and proteins with a conserved LXCXE motif. Cell cycle-dependent phosphorylation by a CDK inhibits Rb target binding and allows cell cycle progression. |



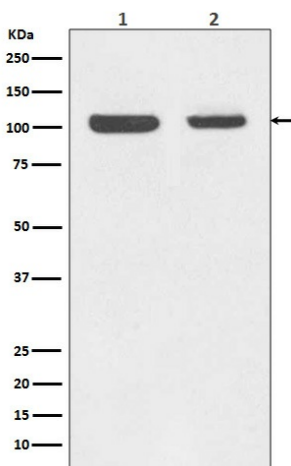
[View online »](#)

Synonyms: OSRC; osteosarcoma; p105-Rb; pp110; pRb; RB

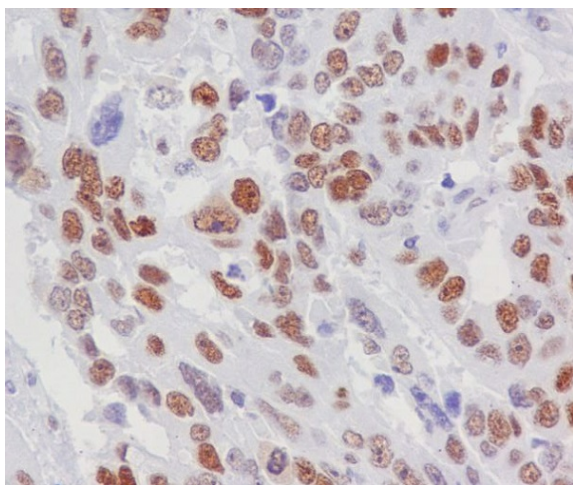
Product images:



Immunofluorescent analysis of SH-SY5Y cells, using Retinoblastoma Antibody.



Western blot analysis of Retinoblastoma in (1) Jurkat lysates; (2) MCF-7 lysates using Rb antibody.



Immunohistochemical analysis of paraffin-embedded human lung cancer, using Retinoblastoma Antibody.