

## Product datasheet for **TA385133M**

### **RASGRF1 Rabbit Monoclonal Antibody [Clone ID: R06-5H5]**

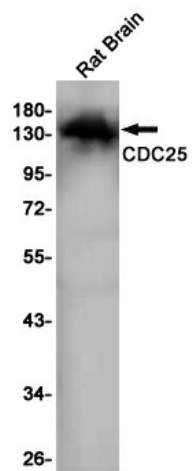
#### **Product data:**

Product Type:	Primary Antibodies
Clone Name:	R06-5H5
Applications:	WB
Recommended Dilution:	WB: 1/1000-1/5000
Reactivity:	Rat
Host:	Rabbit
Isotype:	IgG
Clonality:	Monoclonal
Immunogen:	A synthetic peptide of human CDC25
Formulation:	50mM Tris-Glycine(pH 7.4), 0.15M NaCl, 40% Glycerol, 0.01% Sodium azide and 0.05% BSA
Concentration:	lot specific
Purification:	Affinity Purified
Conjugation:	Unconjugated
Storage:	Store at 4°C short term. Aliquot and store at -20°C long term. Avoid freeze/thaw cycles.
Stability:	1 year
Predicted Protein Size:	Calculated MW: 145 kDa; Observed MW: 145 kDa
Gene Name:	Ras protein specific guanine nucleotide releasing factor 1
Database Link:	<a href="#">Q13972</a>
Background:	Swiss-Prot Acc.Q13972.Promotes the exchange of Ras-bound GDP by GTP.
Synonyms:	CDC25; CDC25L; GNRP; GRF1; GRF55; H-GRF55; PP13187; Ras-GRF1



[View online »](#)

## Product images:



Western blot analysis of CDC25 in rat Brain lysates using CDC25 antibody.