

Product datasheet for **TA385131**

Epac1 (RAPGEF3) Rabbit Polyclonal Antibody

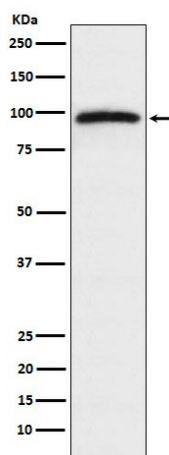
Product data:

| | |
|-------------------------|--|
| Product Type: | Primary Antibodies |
| Applications: | IF, IHC, IP, WB |
| Recommended Dilution: | WB: 1/500-1/2000 IHC: 1/50-1/200 ICC/IF: 1/50-1/200 IP: 1/50 |
| Reactivity: | Human, Mouse, Rat |
| Host: | Rabbit |
| Isotype: | IgG |
| Clonality: | Polyclonal |
| Immunogen: | A synthesized peptide derived from human Epac1 |
| Formulation: | Rabbit IgG in phosphate buffered saline , pH 7.4, 150mM NaCl, 0.02% sodium azide and 50% glycerol. |
| Concentration: | lot specific |
| Purification: | Affinity Chromatography |
| Conjugation: | Unconjugated |
| Storage: | Store at 4°C short term. Aliquot and store at -20°C long term. Avoid freeze/thaw cycles. |
| Stability: | 1 year |
| Predicted Protein Size: | 104kDa |
| Gene Name: | Rap guanine nucleotide exchange factor 3 |
| Database Link: | Entrez Gene 10411 Human O95398 |
| Background: | Swiss-Prot Acc.O95398.The activation of RaP1 by cAMP is independent of PKA and is mediated by recently discovered family of guanine nucleotide exchange factors (GEFs) called cAMP-GEFs or Epacs. The Epac signaling therefore represents a novel mechanism for cAMP signaling with in the cAMP cascade. |
| Synonyms: | 9330170P05Rik; bcm910; CAMP-GEFI; CGEF1; EPAC; EPAC1; HSU79275; MGC21410 |



[View online »](#)

Product images:



Western blot analysis of Epac1 in HeLa lysates using Epac1 antibody.