

Product datasheet for **TA385130M**

RAP1GAP Rabbit Monoclonal Antibody [Clone ID: R08-9F6]

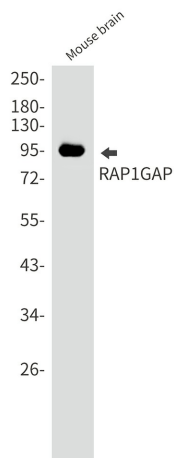
Product data:

Product Type:	Primary Antibodies
Clone Name:	R08-9F6
Applications:	IF, IHC, IP, WB
Recommended Dilution:	WB: 1/2000-1/10000 IHC: 1/200 ICC/IF: 1/20-1/50 IP: 1/20
Reactivity:	Human, Mouse, Rat
Host:	Rabbit
Isotype:	IgG
Clonality:	Monoclonal
Immunogen:	A synthetic peptide of human RAP1GAP
Formulation:	50mM Tris-Glycine(pH 7.4), 0.15M NaCl, 40% Glycerol, 0.01% Sodium azide and 0.05% BSA
Concentration:	lot specific
Purification:	Affinity Purified
Conjugation:	Unconjugated
Storage:	Store at 4°C short term. Aliquot and store at -20°C long term. Avoid freeze/thaw cycles.
Stability:	1 year
Predicted Protein Size:	Calculated MW: 73 kDa; Observed MW: 95 kDa
Gene Name:	RAP1 GTPase activating protein
Database Link:	Entrez Gene 5909 Human P47736
Background:	Swiss-Prot Acc.P47736.GTPase activator for the nuclear Ras-related regulatory protein RAP-1A (KREV-1), converting it to the putatively inactive GDP-bound state.
Synonyms:	KIAA0474; RAP1GA1; Rap1GAP1; RAP1GAPII; RAPGAP

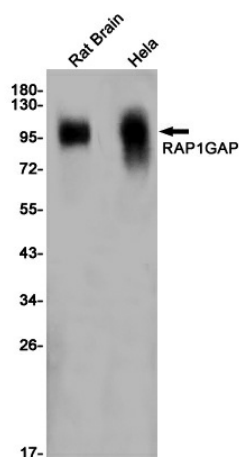


[View online »](#)

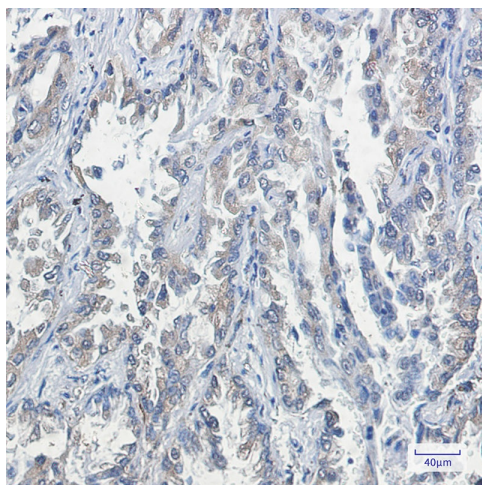
Product images:



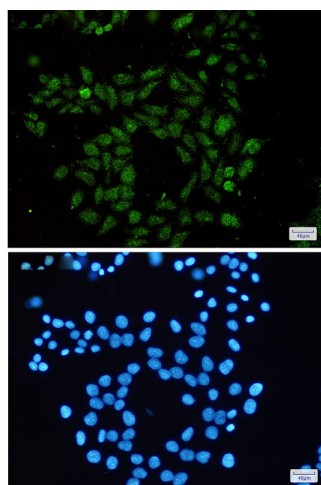
Western blot analysis of RAP1GAP in mouse brain lysates using RAP1GAP antibody.



Western blot analysis of RAP1GAP in rat Brain, HeLa lysates using RAP1GAP antibody.



Immunohistochemistry analysis of paraffin-embedded Human lung cancer using RAP1GAP antibody. High-pressure and temperature Sodium Citrate pH 6.0 was used for antigen retrieval.



Immunocytochemistry analysis of RAP1GAP(green) in Hela using RAP1GAP antibody, and DAPI(blue).