

Product datasheet for **TA385129S**

RAP1A Rabbit Monoclonal Antibody [Clone ID: R03-7H8]

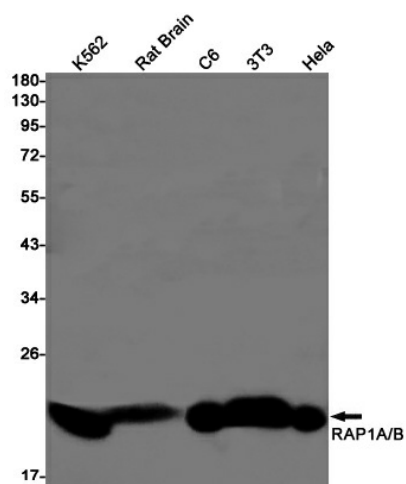
Product data:

Product Type:	Primary Antibodies
Clone Name:	R03-7H8
Applications:	IP, WB
Recommended Dilution:	WB: 1/2000-1/10000 IP: 1/20
Reactivity:	Human, Mouse, Rat
Host:	Rabbit
Isotype:	IgG
Clonality:	Monoclonal
Immunogen:	A synthetic peptide of human RAP1A/B
Formulation:	50mM Tris-Glycine(pH 7.4), 0.15M NaCl, 40% Glycerol, 0.01% Sodium azide and 0.05% BSA
Concentration:	lot specific
Purification:	Affinity Purified
Conjugation:	Unconjugated
Storage:	Store at 4°C short term. Aliquot and store at -20°C long term. Avoid freeze/thaw cycles.
Stability:	1 year
Predicted Protein Size:	Calculated MW: 21 kDa; Observed MW: 21 kDa
Gene Name:	RAP1A, member of RAS oncogene family
Database Link:	Entrez Gene 5906 Human P61224
Background:	Swiss-Prot Acc.P61224.GTP-binding protein that possesses intrinsic GTPase activity. Contributes to the polarizing activity of KRIT1 and CDH5 in the establishment and maintenance of correct endothelial cell polarity and vascular lumen. Required for the localization of phosphorylated PRKCZ, PARD3 and TIAM1 to the cell junction. Plays a role in the establishment of basal endothelial barrier function.
Synonyms:	C21KG; G-22K; KREV-1; KREV1; OTTHUMP00000013741; RAP1; SMGP21



[View online »](#)

Product images:



Western blot analysis of RAP1A/B in K562, rat Brain, C6, 3T3, HeLa lysates using RAP1 antibody.