

## Product datasheet for **TA385126S**

### **RAMP1 Rabbit Monoclonal Antibody [Clone ID: R04-2I8]**

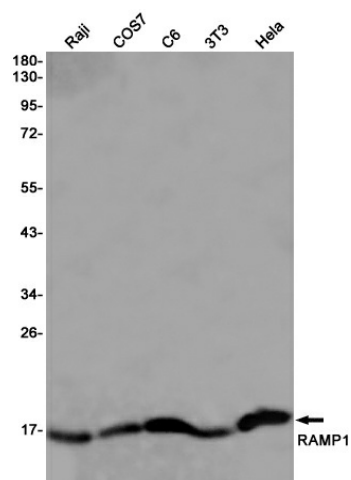
#### **Product data:**

Product Type:	Primary Antibodies
Clone Name:	R04-2I8
Applications:	WB
Recommended Dilution:	WB: 1/1000-1/5000
Reactivity:	Human, Mouse, Rat
Host:	Rabbit
Isotype:	IgG
Clonality:	Monoclonal
Immunogen:	A synthetic peptide of human RAMP1
Formulation:	50mM Tris-Glycine(pH 7.4), 0.15M NaCl, 40% Glycerol, 0.01% Sodium azide and 0.05% BSA
Concentration:	lot specific
Purification:	Affinity Purified
Conjugation:	Unconjugated
Storage:	Store at 4°C short term. Aliquot and store at -20°C long term. Avoid freeze/thaw cycles.
Stability:	1 year
Predicted Protein Size:	Calculated MW: 17 kDa; Observed MW: 17 kDa
Gene Name:	receptor activity modifying protein 1
Database Link:	<a href="#">Entrez Gene 10267 Human O60894</a>
Background:	Swiss-Prot Acc.O60894.Transports the calcitonin gene-related peptide type 1 receptor (CALCRL) to the plasma membrane. Acts as a receptor for calcitonin-gene-related peptide (CGRP) together with CALCRL.
Synonyms:	RAMP1



[View online »](#)

## Product images:



Western blot analysis of RAMP1 in Raji, COS7, C6, 3T3, HeLa lysates using RAMP1 antibody.