

## Product datasheet for **TA385122M**

### RAF1 Rabbit Polyclonal Antibody

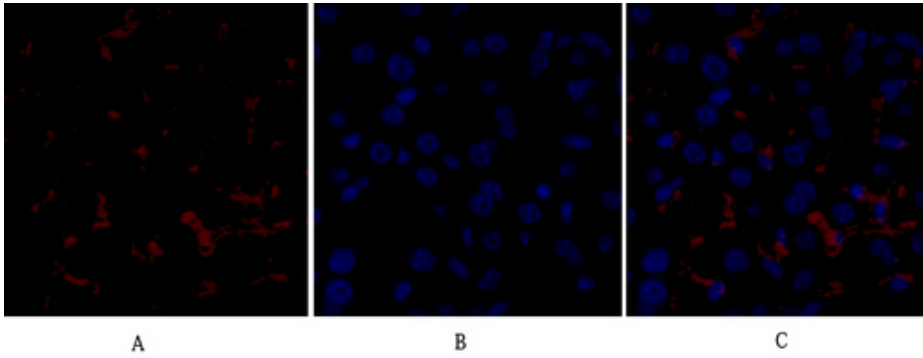
#### Product data:

Product Type:	Primary Antibodies
Applications:	ELISA, IF, IHC, WB
Recommended Dilution:	IF: 1/50-200 WB: 1/500-1/2000 IHC: 1/100-1/300 ELISA: 1/5000
Reactivity:	Human, Mouse, Rat
Host:	Rabbit
Isotype:	IgG
Clonality:	Polyclonal
Immunogen:	The antiserum was produced against synthesized peptide derived from human C-RAF. AA range:251-300
Formulation:	Liquid in PBS containing 50% glycerol, 0.5% BSA and 0.02% sodium azide, pH 7.3.
Concentration:	lot specific
Purification:	Affinity Purified
Conjugation:	Unconjugated
Storage:	Store at 4°C short term. Aliquot and store at -20°C long term. Avoid freeze/thaw cycles.
Stability:	1 year
Predicted Protein Size:	Observed MW (kDa):75
Gene Name:	Raf-1 proto-oncogene, serine/threonine kinase
Database Link:	<a href="#">Entrez Gene 5894 Human P04049</a>
Background:	Swiss-Prot Acc.P04049.
Synonyms:	C-RAF; CRAF; NS5; RAF; Raf-1

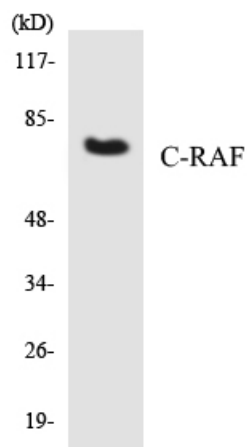


[View online »](#)

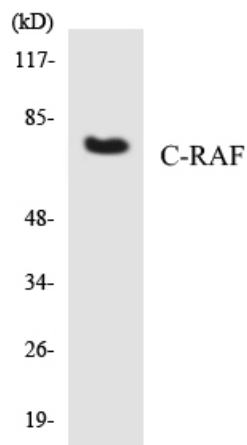
## Product images:



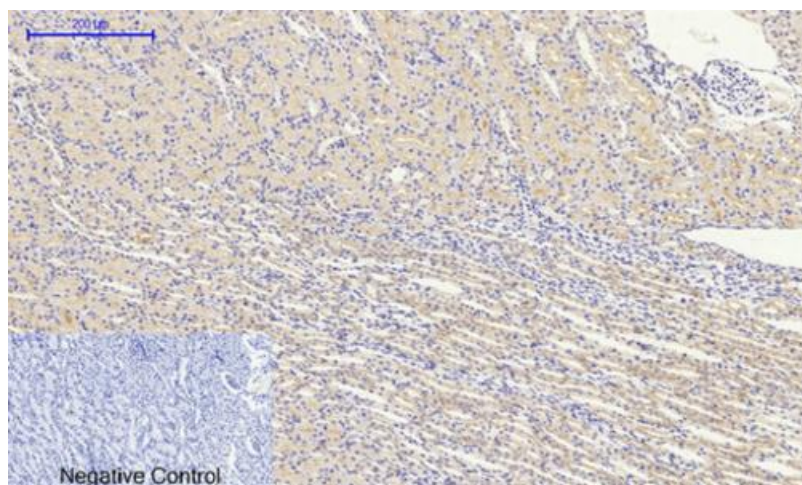
Immunofluorescence analysis of mouse liver tissue. 1, Raf-1 Polyclonal Antibody (red) was diluted at 1:200 (4°C, overnight). 2, Cy3 labeled Secondary antibody was diluted at 1:300 (room temperature, 50 min). 3, Picture B: DAPI (blue) 10 min. A: Raf1. B: DAPI. C: A+B



Western blot analysis of Raf1 in HepG2 lysates using Raf1 antibody.



Western blot analysis of Raf1 in HepG2 cells using Raf1 antibody.



Immunohistochemical analysis of paraffin-embedded Rat kidney tissue. 1, Raf-1 Polyclonal Antibody was diluted at 1:2 (4°C, overnight). 2, Sodium citrate pH 6. was used for antibody retrieval (>98°C, 2min). 3, Secondary antibody was diluted at 1:2 (room temperature, 3min)