

## Product datasheet for **TA385121**

### RAF1 Rabbit Polyclonal Antibody

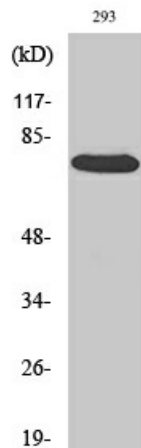
#### Product data:

Product Type:	Primary Antibodies
Applications:	ELISA, IHC, WB
Recommended Dilution:	WB: 1/500-1/2000 IHC: 1/100-1/300 ELISA: 1/5000
Reactivity:	Human, Mouse, Rat
Host:	Rabbit
Isotype:	IgG
Clonality:	Polyclonal
Immunogen:	The antiserum was produced against synthesized peptide derived from human C-RAF. AA range:11-60
Formulation:	Liquid in PBS containing 50% glycerol, 0.5% BSA and 0.02% sodium azide, pH 7.3.
Concentration:	lot specific
Purification:	Affinity Purified
Conjugation:	Unconjugated
Storage:	Store at 4°C short term. Aliquot and store at -20°C long term. Avoid freeze/thaw cycles.
Stability:	1 year
Predicted Protein Size:	Observed MW (kDa):73
Gene Name:	Raf-1 proto-oncogene, serine/threonine kinase
Database Link:	<a href="#">Entrez Gene 5894 Human P04049</a>
Background:	Swiss-Prot Acc.P04049.
Synonyms:	C-RAF; CRAF; NS5; RAF; Raf-1

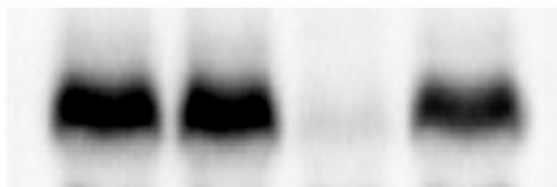


[View online »](#)

## Product images:



Western blot analysis of Raf1 in various lysates using Raf1 antibody.



**Raf-1**

Western blot analysis of Raf1 lysates using Raf1 antibody.