

## Product datasheet for **TA385119**

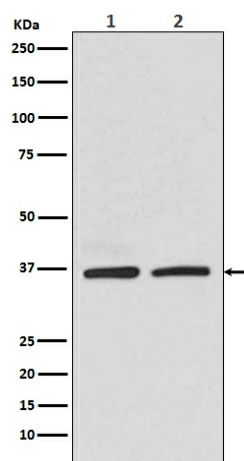
### **RAD51 Rabbit Polyclonal Antibody**

#### **Product data:**

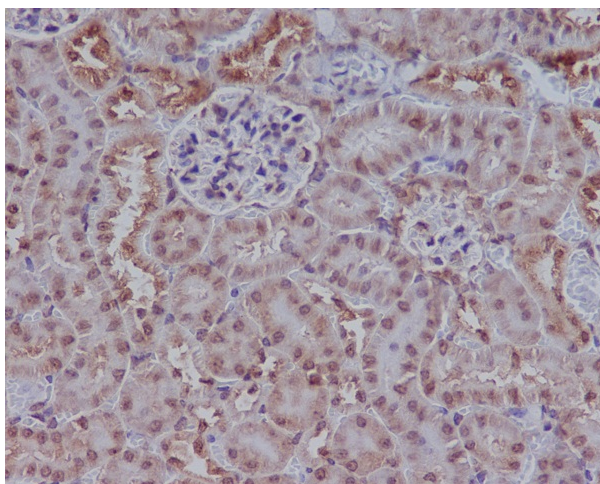
Product Type:	Primary Antibodies
Applications:	FC, IF, IHC, IP, WB
Recommended Dilution:	WB: 1/500-1/2000 IHC: 1/50-1/200 ICC/IF: 1/50-1/200 IP: 1/50 FC: 1/50
Reactivity:	Human, Mouse, Rat
Host:	Rabbit
Isotype:	IgG
Clonality:	Polyclonal
Immunogen:	A synthesized peptide derived from human Rad51
Formulation:	Rabbit IgG in phosphate buffered saline , pH 7.4, 150mM NaCl, 0.02% sodium azide and 50% glycerol.
Concentration:	lot specific
Purification:	Affinity Chromatography
Conjugation:	Unconjugated
Storage:	Store at 4°C short term. Aliquot and store at -20°C long term. Avoid freeze/thaw cycles.
Stability:	1 year
Predicted Protein Size:	37kDa
Gene Name:	RAD51 recombinase
Database Link:	<a href="#">Entrez Gene 5888 Human Q06609</a>
Background:	Swiss-Prot Acc.Q06609.Rad51 participates in a common DNA damage response pathway associated with the activation of homologous recombination and double-strand break repair. Binds to single and double-stranded DNA and exhibits DNA-dependent ATPase activity. Underwinds duplex DNA and forms helical nucleoprotein filaments.
Synonyms:	BRCC5; HRAD51; HsRad51; HsT16930; RAD51A; RAD51D; RAD51L3; RECA



[View online »](#)

**Product images:**

Western blot analysis of Rad51 in (1)HEK293 lysates; (2)K562 lysates using Rad51 antibody.



Immunohistochemical analysis of paraffin-embedded mouse kidney, using Rad51 Antibody.