

## Product datasheet for **TA385118**

### **RAD50 Rabbit Polyclonal Antibody**

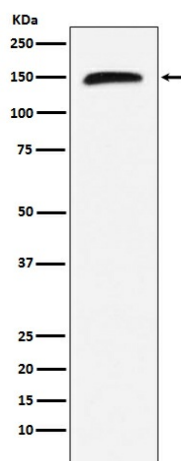
#### **Product data:**

Product Type:	Primary Antibodies
Applications:	IF, WB
Recommended Dilution:	WB: 1/500-1/2000 ICC/IF: 1/50-1/200
Reactivity:	Human, Mouse, Rat
Host:	Rabbit
Isotype:	IgG
Clonality:	Polyclonal
Immunogen:	A synthesized peptide derived from human Rad50
Formulation:	Rabbit IgG in phosphate buffered saline , pH 7.4, 150mM NaCl, 0.02% sodium azide and 50% glycerol.
Concentration:	lot specific
Purification:	Affinity Chromatography
Conjugation:	Unconjugated
Storage:	Store at 4°C short term. Aliquot and store at -20°C long term. Avoid freeze/thaw cycles.
Stability:	1 year
Predicted Protein Size:	154kDa
Gene Name:	RAD50 double strand break repair protein
Database Link:	<a href="#">Entrez Gene 10111 Human Q92878</a>
Background:	Swiss-Prot Acc.Q92878.Component of the MRN complex, which plays a central role in double-strand break (DSB) repair, DNA recombination, maintenance of telomere integrity and meiosis. The complex possesses single-strand endonuclease activity and double-strand-specific 3'-5' exonuclease activity, which are provided by MRE11A.
Synonyms:	hRad50; NBSLD; RAD50-2



[View online »](#)

## Product images:



Western blot analysis of Rad50 in Jurkat lysates;  
using Rad50 antibody.