

## Product datasheet for **TA385117M**

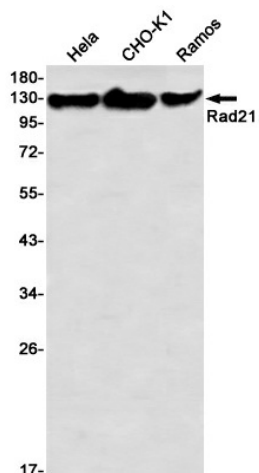
### **RAD21 Rabbit Monoclonal Antibody [Clone ID: R03-5I0]**

#### **Product data:**

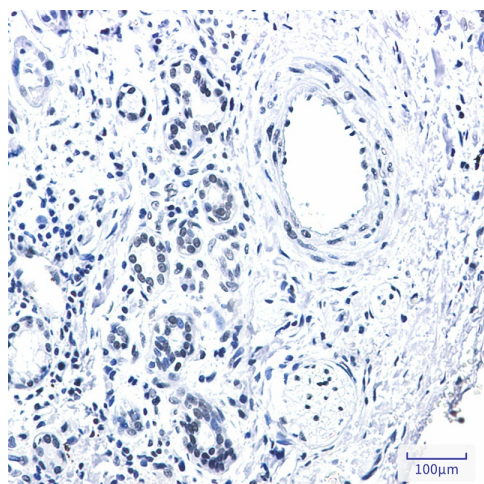
Product Type:	Primary Antibodies
Clone Name:	R03-5I0
Applications:	IF, IHC, WB
Recommended Dilution:	WB: 1/1000 IHC-P: 1/100 ICC/IF: 1/100
Reactivity:	Human, Hamster
Host:	Rabbit
Isotype:	IgG
Clonality:	Monoclonal
Immunogen:	A synthetic peptide of human Rad21
Formulation:	50mM Tris-Glycine(pH 7.4), 0.15M NaCl, 40% Glycerol, 0.01% Sodium azide and 0.05% BSA
Concentration:	lot specific
Purification:	Affinity Purified
Conjugation:	Unconjugated
Storage:	Store at 4°C short term. Aliquot and store at -20°C long term. Avoid freeze/thaw cycles.
Stability:	1 year
Predicted Protein Size:	Calculated MW:72 kDa,Observed MW:130 kDa
Gene Name:	RAD21 cohesin complex component
Database Link:	<a href="#">Entrez Gene 5885 Human</a> <a href="#">O60216</a>
Synonyms:	FLJ25655; FLJ40596; hHR21; HR21; HRAD21; KIAA0078; MCD1; NXP-1; NXP1; SCC1


[View online »](#)

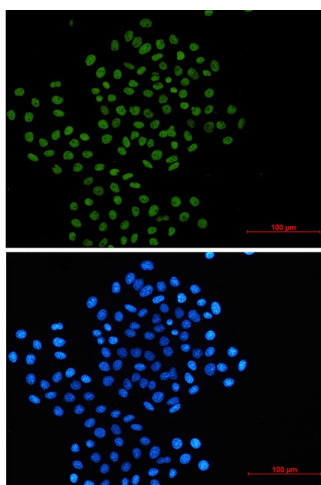
## Product images:



Western blot analysis of Rad21 in HeLa, CHO-K1, Ramos lysates using Rad21 antibody.



Immunohistochemistry analysis of paraffin-embedded Human lung cancer tissue using Rad21 antibody. High-pressure and temperature Sodium Citrate pH 6.0 was used for antigen retrieval.



Immunocytochemistry analysis of Rad21 (green) in HeLa using Rad21 antibody, and DAPI (blue).