

## Product datasheet for **TA385115**

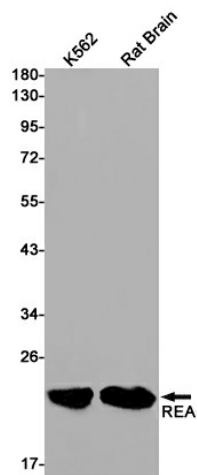
### **RAC3 Rabbit Monoclonal Antibody [Clone ID: R01-6I8]**

#### **Product data:**

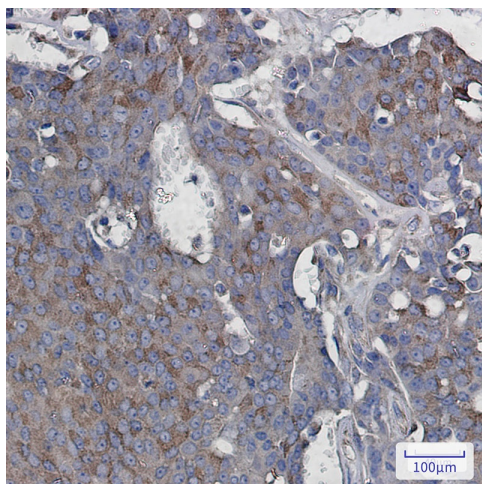
Product Type:	Primary Antibodies
Clone Name:	R01-6I8
Applications:	IHC, WB
Recommended Dilution:	WB: 1/1000 IHC: 1/20
Reactivity:	Human, Mouse, Rat
Host:	Rabbit
Isotype:	IgG
Clonality:	Monoclonal
Immunogen:	A synthetic peptide of human RAC3
Formulation:	50mM Tris-Glycine(pH 7.4), 0.15M NaCl, 40% Glycerol, 0.01% Sodium azide and 0.05% BSA
Concentration:	lot specific
Purification:	Affinity Purified
Conjugation:	Unconjugated
Storage:	Store at 4°C short term. Aliquot and store at -20°C long term. Avoid freeze/thaw cycles.
Stability:	1 year
Predicted Protein Size:	Calculated MW: 21 kDa; Observed MW: 21 kDa
Gene Name:	ras-related C3 botulinum toxin substrate 3 (rho family, small GTP binding protein Rac3)
Database Link:	<a href="#">Entrez Gene 5881 Human P60763</a>
Background:	Swiss-Prot Acc.P60763. Plasma membrane-associated small GTPase which cycles between an active GTP-bound and inactive GDP-bound state. In active state binds to a variety of effector proteins to regulate cellular responses, such as cell spreading and the formation of actin-based protrusions including lamellipodia and membrane ruffles. Promotes cell adhesion and spreading on fibrinogen in a CIB1 and alpha-IIb/beta3 integrin-mediated manner.
Synonyms:	p21-Rac3



[View online »](#)

**Product images:**

Western blot analysis of RAC3 in K562, rat Brain lysates using Rac3 antibody.



Immunohistochemistry analysis of paraffin-embedded Human breast cancer using RAC3 antibody. High-pressure and temperature Sodium Citrate pH 6.0 was used for antigen retrieval.