

## Product datasheet for **TA385114M**

### **RABEPK Rabbit Monoclonal Antibody [Clone ID: R06-8K2]**

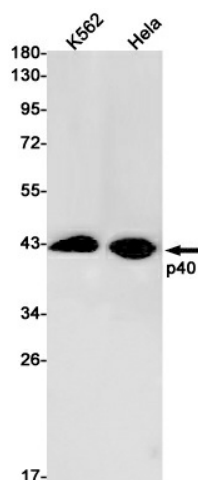
#### **Product data:**

Product Type:	Primary Antibodies
Clone Name:	R06-8K2
Applications:	WB
Recommended Dilution:	WB: 1/1000
Reactivity:	Human
Host:	Rabbit
Isotype:	IgG
Clonality:	Monoclonal
Immunogen:	Recombinant protein of human p40
Formulation:	50mM Tris-Glycine(pH 7.4), 0.15M NaCl, 40% Glycerol, 0.01% Sodium azide and 0.05% BSA
Concentration:	lot specific
Purification:	Affinity Purified
Conjugation:	Unconjugated
Storage:	Store at 4°C short term. Aliquot and store at -20°C long term. Avoid freeze/thaw cycles.
Stability:	1 year
Predicted Protein Size:	Calculated MW: 41 kDa; Observed MW: 40 kDa
Database Link:	<a href="#">Q7Z6M1</a>
Background:	Swiss-Prot Acc.Q7Z6M1.Rab9 effector required for endosome to trans-Golgi network (TGN) transport.



[View online »](#)

## Product images:



Western blot analysis of p40 in K562, HeLa lysates using p40 antibody.