

Product datasheet for **TA385113M**

Rab9 (RAB9A) Rabbit Monoclonal Antibody [Clone ID: R09-7I8]

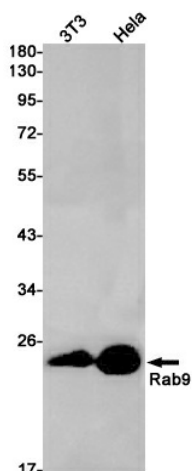
Product data:

Product Type:	Primary Antibodies
Clone Name:	R09-7I8
Applications:	IHC, WB
Recommended Dilution:	WB: 1/1000-1/5000 IHC: 1/50
Reactivity:	Human, Mouse
Host:	Rabbit
Isotype:	IgG
Clonality:	Monoclonal
Immunogen:	A synthetic peptide of human Rab9
Formulation:	50mM Tris-Glycine(pH 7.4), 0.15M NaCl, 40% Glycerol, 0.01% Sodium azide and 0.05% BSA
Concentration:	lot specific
Purification:	Affinity Purified
Conjugation:	Unconjugated
Storage:	Store at 4°C short term. Aliquot and store at -20°C long term. Avoid freeze/thaw cycles.
Stability:	1 year
Predicted Protein Size:	Calculated MW: 23 kDa; Observed MW: 23 kDa
Gene Name:	RAB9A, member RAS oncogene family
Database Link:	Entrez Gene 9367 Human P51151
Background:	Swiss-Prot Acc.P51151.Involved in the transport of proteins between the endosomes and the trans Golgi network. Involved in the recruitment of SGSM2 to melanosomes and is required for the proper trafficking of melanogenic enzymes TYR, TYRP1 and DCT/TYRP2 to melanosomes in melanocytes.
Synonyms:	Rab-9A; RAB9

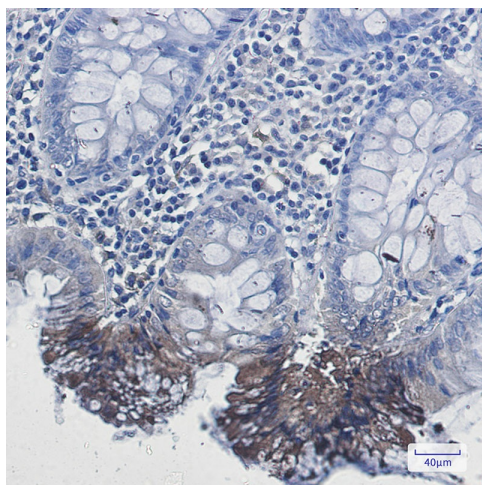


[View online »](#)

Product images:



Western blot analysis of Rab9 in 3T3, HeLa lysates using Rab9 antibody.



Immunohistochemistry analysis of paraffin-embedded Human colon cancer using Rab9 antibody. High-pressure and temperature Sodium Citrate pH 6.0 was used for antigen retrieval.